

APP CRS	Rwy Idg	3999
176°	TDZE	777
	Apt Elev	778

RNAV (GPS) RWY 18

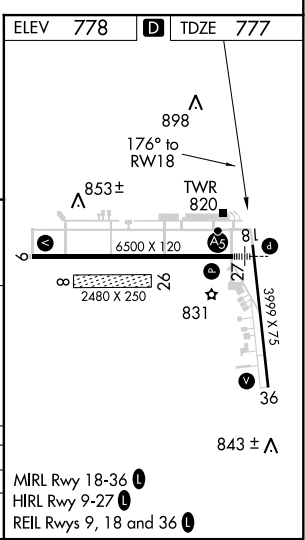
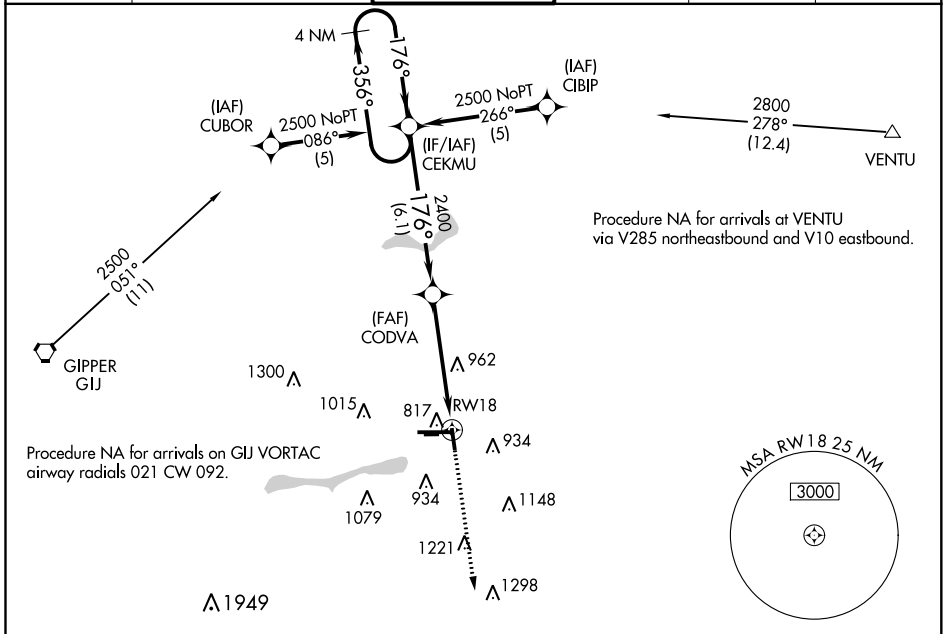
ELKHART MUNI (EKM)

RNP APCH

▼ When local altimeter setting not received, use South Bend altimeter setting and increase all MDA 40 feet. Circling Rwy 36 NA at night. Circling NA to Rwy 8 and 26.
▲ Rwy 18 helicopter visibility reduction below ¼ SM NA.

MISSED APPROACH:
 Climb to 2500 direct BUCGA and hold.

AWOS-3 124.475	SOUTH BEND APP CON * 118.55 257.8	ELKHART TOWER * 119.5 (CTAF) 0	GND CON 121.8	CLNC DEL 121.8	UNICOM 122.95
--------------------------	---	--	-------------------------	--------------------------	-------------------------



4 NM Holding Pattern	CEKMU	CODVA	RWY 18
2500	← 356°	→ 176°	176°
		3.04° TCH 37	
	6.1 NM	4.9 NM	

CATEGORY	A	B	C	D
LNAV MDA	1280-1	503 (600-1)	1280-1½	503 (600-1½)
C CIRCLING	1280-1 502 (600-1)	1300-1 522 (600-1)	1380-1¾ 602 (700-1¾)	1580-2½ 802 (900-2½)

EC-2, 16 JUN 2022 to 14 JUL 2022

EC-2, 16 JUN 2022 to 14 JUL 2022