


WAAS CH <b>50107</b> <b>W27A</b>	APP CRS <b>274°</b>	Rwy Idg TDZE Apt Elev	<b>6500</b> <b>778</b> <b>778</b>
----------------------------------------	------------------------	-----------------------------	-----------------------------------------

# RNAV (GPS) RWY 27

ELKHART MUNI (EKM)

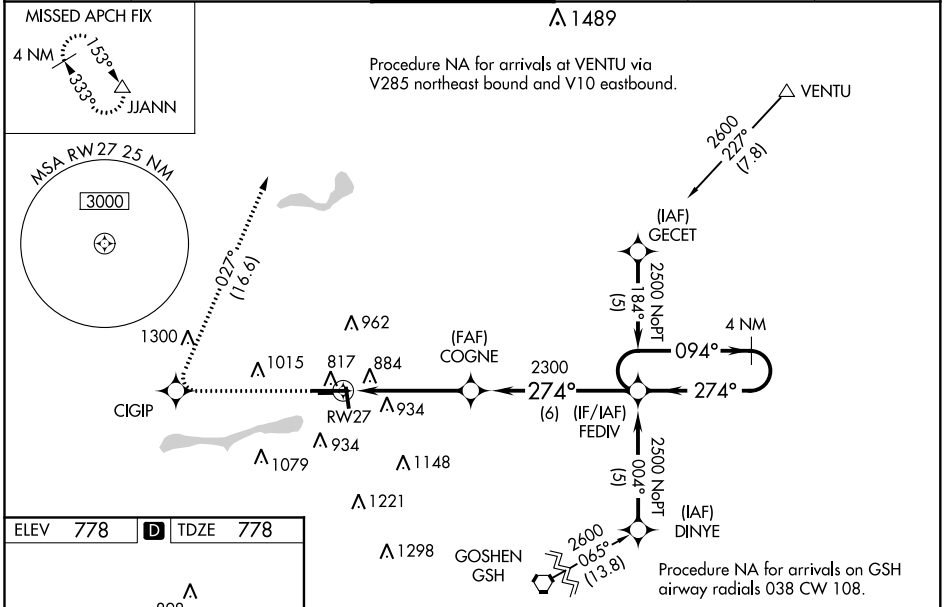
**RNP APCH**

▼ When local altimeter setting not received, use South Bend altimeter setting: increase LPV DA to 1111 feet; increase LNAV/VNAV DA to 1261 feet; increase all MDA 40 feet and LNAV visibility Cat C/D to RVR 5500, Circling Cat D visibility ¼ SM. VDP and Baro-VNAV NA with South Bend altimeter setting. Circling Rwy 36 NA at night. Circling NA to Rwy 8 and 26. Rwy 27 helicopter visibility reduction below RVR 4000 NA. For uncompensated Baro-VNAV systems, LNAV/VNAV NA below -16°C or above 54°C. For inop ALS, increase LPV all Cats visibility to RVR 4500, LNAV/VNAV all Cats visibility to 1½ SM, LNAV Cat A/B visibility to RVR 5500 and Cat C/D to 1½ SM. For inop ALS when using South Bend altimeter setting, increase LNAV/VNAV all Cats visibility to 1½ SM and LNAV Cat A/B to RVR 5500

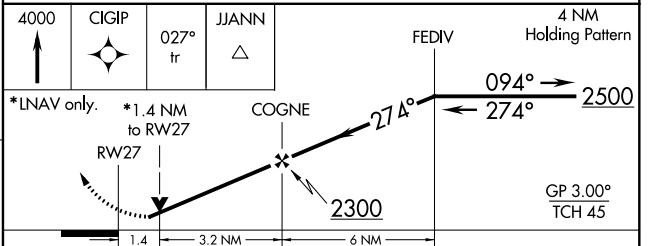
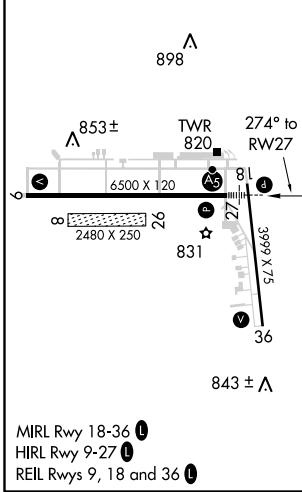
**MALS R** 

**MISSED APPROACH:**  
Climb to 4000 direct CIGIP and via 027° track to JJANN and hold.

AWOS-3 <b>124.475</b>	SOUTH BEND APP CON ★ <b>118.55 257.8</b>	ELKHART TOWER ★ <b>119.5 (CTAF) 0</b>	GND CON <b>121.8</b>	CLNC DEL <b>121.8</b>	UNICOM <b>122.95</b>
--------------------------	---------------------------------------------	------------------------------------------	-------------------------	--------------------------	-------------------------



ELEV 778	<b>D</b>	TDZE 778
----------	----------	----------



CATEGORY	A	B	C	D
LPV DA		1071/40	293 (300-¾)	
LNAV/VNAV DA		1221/50	443 (500-1)	
LNAV MDA	1260/40	482 (500-¾)	1260/50	482 (500-1)
<b>C</b> CIRCLING	1260-1½ 482 (500-1½)	1300-1½ 522 (600-1½)	1380-1¾ 602 (700-1¾)	1580-2½ 802 (900-2½)

EC-2, 16 JUN 2022 to 14 JUL 2022

EC-2, 16 JUN 2022 to 14 JUL 2022