

RNAV (GPS) RWY 9

ELKHART MUNI (EKM)

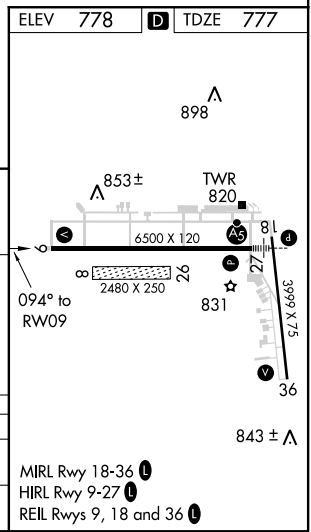
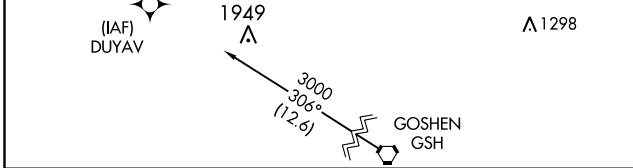
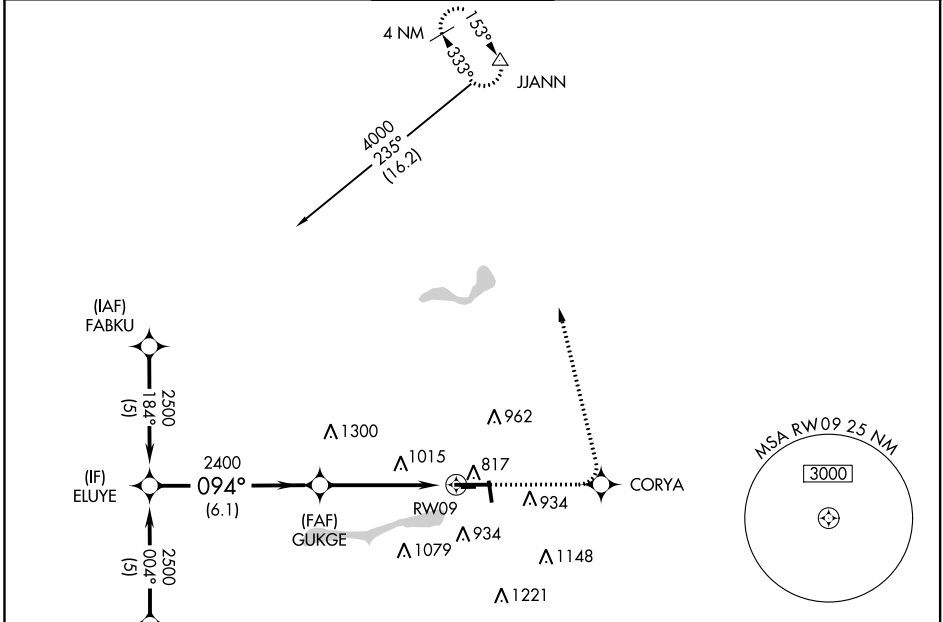
APP CRS	Rwy Idg	6500
094°	TDZE	777
	Apt Elev	778

RNP APCH.

▽ VDP NA when using South Bend altimeter setting. Circling Rwy 36 NA at night. Circling NA to Rwy 8 and 26. Rwy 9 helicopter visibility reduction below 3/4 SM NA. When local altimeter setting not received, use South Bend altimeter setting and increase all MDA 40 feet.

▲ MISSED APPROACH: Climb to 4000 direct CORYA and via 351° track to JJANN and hold.

AWOS-3 124.475	SOUTH BEND APP CON * 118.55 257.8	ELKHART TOWER * 119.5 (CTAF) 0	GND CON 121.8	CLNC DEL 121.8	UNICOM 122.95
--------------------------	---	---	-------------------------	--------------------------	-------------------------



ELUYE	VGSI and descent angles not coincident (VGSI Angle 3.00/TCH 38).		4000	CORYA	351° tr	JJANN
	Procedure Turn NA					
2500		094°	GUKGE	*1.6 NM to RWY09		*RNAV only.
2400		3.04%	TCH 49	RWY09		
6.1 NM			3.3 NM	1.6		

CATEGORY	A	B	C	D
LNVA MDA	1340-1	563 (600-1)	1340-1½ 563 (600-1½)	1340-1¾ 563 (600-1¾)
C CIRCLING	1340-1	562 (600-1)	1380-1¾ 602 (700-1¾)	1580-2½ 802 (900-2½)

EC-2, 16 JUN 2022 to 14 JUL 2022

EC-2, 16 JUN 2022 to 14 JUL 2022