

VORTAC GJ 115.4 Chan 101	APP CRS 102°	Rwy Idg TDZE 777 Apt Elev 778	6500
--	------------------------	---	-------------

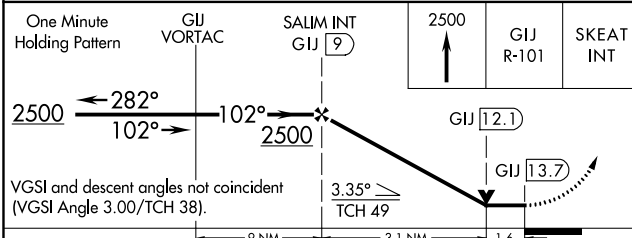
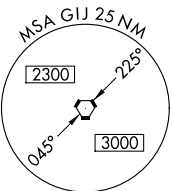
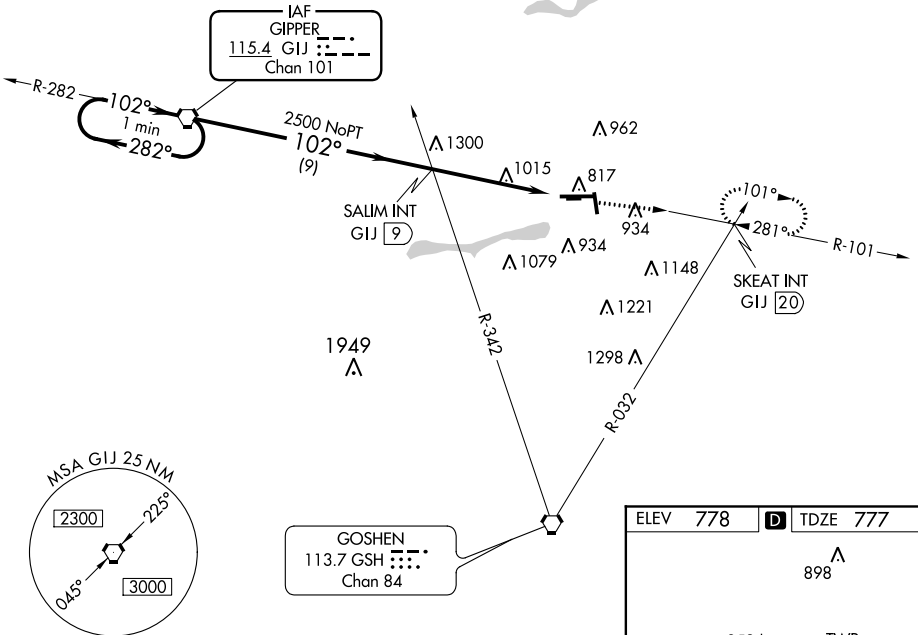
VOR RWY 9
ELKHART MUNI (EKM)

▼ Circling Rwy 36 NA at night. Circling NA to Rwy 8 and 26. Rwy 9 helicopter visibility reduction below $\frac{3}{4}$ SM NA. When local altimeter setting not received, use South Bend altimeter setting and increase all MDA 40 feet. VDP NA when using South Bend altimeter setting.

▲ MISSED APPROACH: Climb to 2500 via GJ R-101 to SKEAT INT/GJ 20 DME and hold.

AWOS-3 124.475	SOUTH BEND APP CON * 118.55 257.8	ELKHART TOWER * 119.5 (CTAF) 0	GND CON 121.8	CLNC DEL 121.8	UNICOM 122.95
--------------------------	---	--	-------------------------	--------------------------	-------------------------

NoPT for arrivals on GJ VORTAC
airway radials 209 CW 310.



ELEV 778	TDZE 777
----------	----------

RWY 9 Details:
 - Runway: 6500 X 120
 - Taxiway: 2480 X 250
 - Lights: 81, 831, 36, 843±
 - Distance: 102° 4.7 NM from FAF
 - MIRA: MRL Rwy 18-36, HIRL Rwy 9-27, REIL Rwy 9, 18 and 36
 - FAF to MAP: 4.7 NM
 - Speeds: Knots (60, 90, 120, 150, 180), Min:Sec (4:42, 3:08, 2:21, 1:53, 1:34)

CATEGORY	A	B	C	D
S-9	1340-1 563 (600-1)		1340-1½ 563 (600-1½)	1340-1¾ 563 (600-1¾)
C CIRCLING	1340-1 562 (600-1)		1380-1¾ 602 (700-1¾)	1580-2½ 802 (900-2½)

EC-2, 16 JUN 2022 to 14 JUL 2022

EC-2, 16 JUN 2022 to 14 JUL 2022