

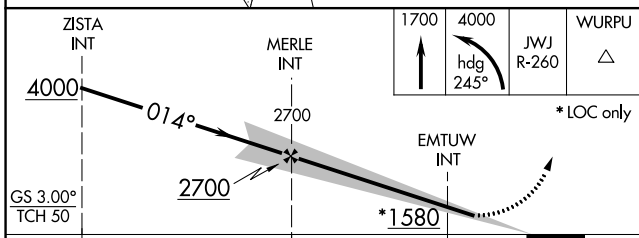
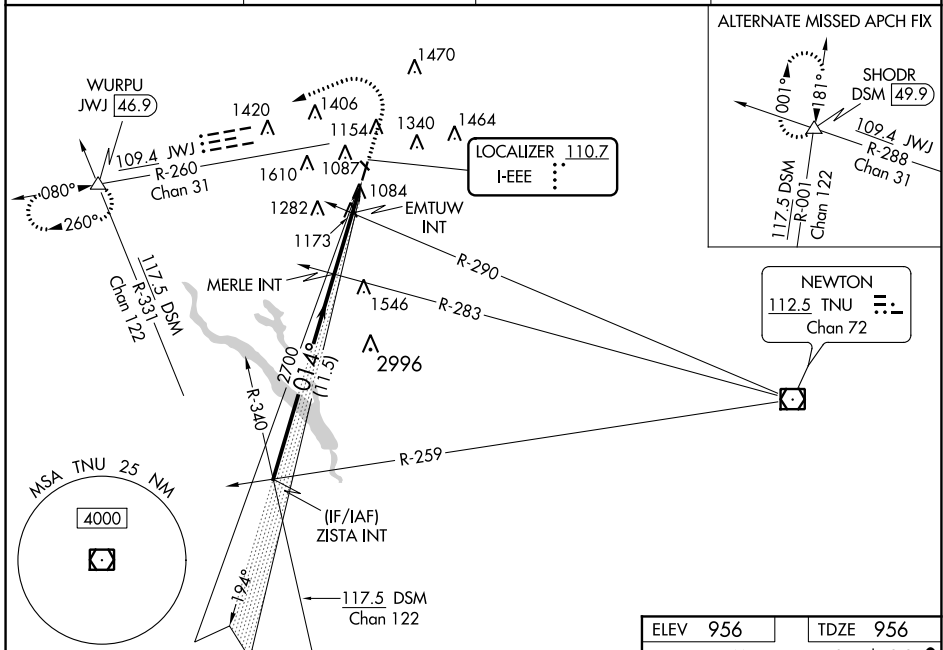
LOC I-EEEE <b>110.7</b>	APP CRS <b>014°</b>	Rwy Idg TDZE Apt Elev	<b>5701</b> <b>956</b> <b>956</b>
----------------------------	------------------------	-----------------------------	---

# ILS or LOC RWY 1

AMES MUNI (AMW)

<p>-27°C</p>	<p>MALSR</p>	<p>MISSED APPROACH: Climb to 1700 then climbing left turn to 4000 on heading 245° and JWJ VOR/DME R-260 to WURPU INT/JWJ 46.9 DME and hold.</p>
--------------	--------------	---

ASOS <b>132.025</b>	DES MOINES APP CON <b>123.9 307.15</b>	CLNC DEL <b>126.0</b>	UNICOM <b>122.7 (CTAF)</b>
------------------------	---	--------------------------	-------------------------------



CATEGORY	A	B	C	D
S-ILS 1		1206-1/2	250 (300-1/2)	
S-LOC 1	1580-1/2	624 (700-1/2)	1580-1 3/8 684 (700-2)	624 (700-1 3/8) 1004 (1100-3)
CIRCLING	1580-1	624 (700-1)	1640-2 684 (700-2)	1960-3 1004 (1100-3)
EMTUW FIX MINIMUMS (DUAL VOR RECEIVERS REQUIRED)				
S-LOC 1	1440-1/2	484 (500-1/2)	1440-1	484 (500-1)
CIRCLING	1440-1 484 (500-1)	1460-1 504 (600-1)	1640-2 684 (700-2)	1960-3 1004 (1100-3)

ELEV 956	TDZE 956
----------	----------

MIRL Rwy 1-19 and 13-31

975  
3491 X 75  
5701 X 100 - 0.6% UP  
014° 5.3 NM from FAF

FAF to MAP 5.3 NM	Knots	60	90	120	150	180
	Min:Sec	5:18	3:32	2:39	2:07	1:46

NC-3, 16 JUN 2022 to 14 JUL 2022

NC-3, 16 JUN 2022 to 14 JUL 2022