

WAAS CH <b>61217</b> <b>W19A</b>	APP CRS <b>194°</b>	Rwy Idg TDZE Apt Elev	<b>5701</b> <b>937</b> <b>956</b>
--	------------------------	-----------------------------	---

# RNAV (GPS) RWY 19

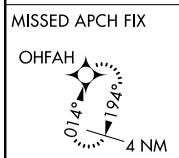
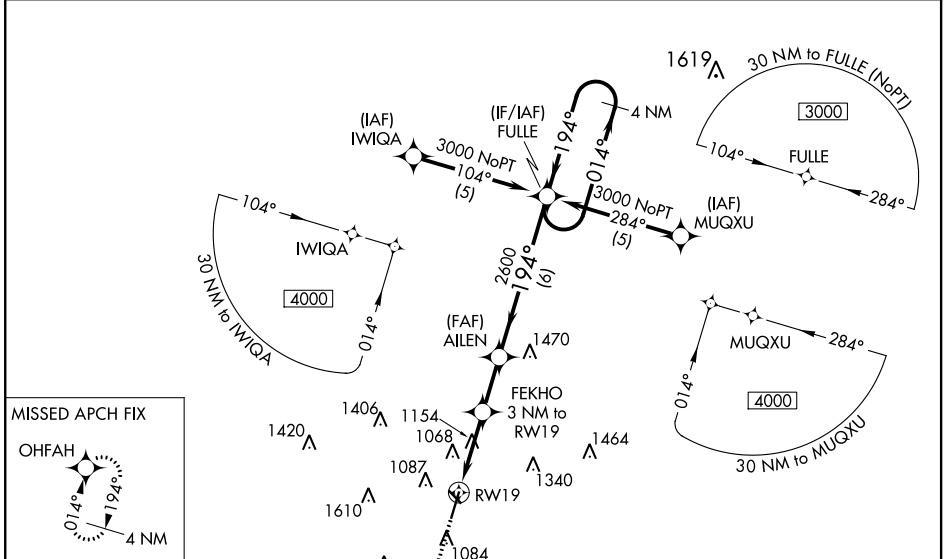
AMES MUNI (AMW)

RNP APCH.

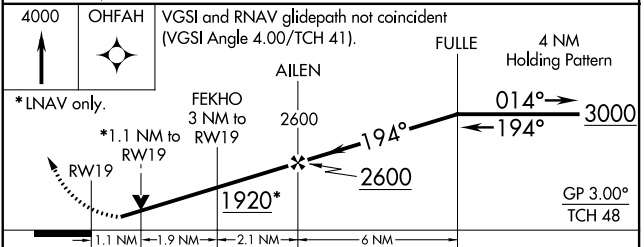
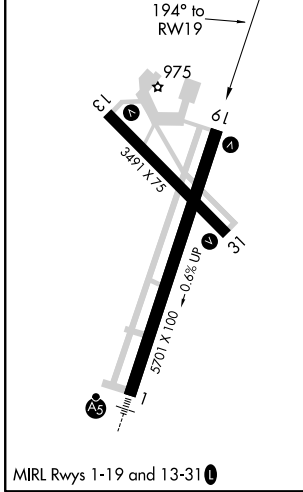
Baro-VNAV and VDP NA when using Ankeny altimeter setting. For uncompensated Baro-VNAV systems, LNAV/VNAV NA below -16°C or above 54°C. Rwy 19 helicopter visibility reduction below 3/4 SM NA. When local altimeter setting not received, use Ankeny altimeter setting and increase all DA 49 feet and LNAV/VNAV all Cats visibility 1/4 mile, increase all MDA 60 feet and LNAV Cat C visibility 1/4 mile.

MISSED APPROACH: Climb to 4000 direct OHFAH and hold.

ASOS <b>132.025</b>	DES MOINES APP CON <b>123.9 307.15</b>	CLNC DEL <b>126.0</b>	UNICOM <b>122.7 (CTAF)</b>
------------------------	---	--------------------------	-------------------------------



ELEV 956	TDZE 937
----------	----------



CATEGORY	A	B	C	D
LPV DA	1187-1 250 (300-1)			NA
LNAV/VNAV DA	1352-1 1/2 415 (400-1/2)			NA
LNAV MDA	1420-1 483 (500-1)		1420-1 3/8 483 (500-1 3/8)	NA

NC-3, 16 JUN 2022 to 14 JUL 2022

NC-3, 16 JUN 2022 to 14 JUL 2022