

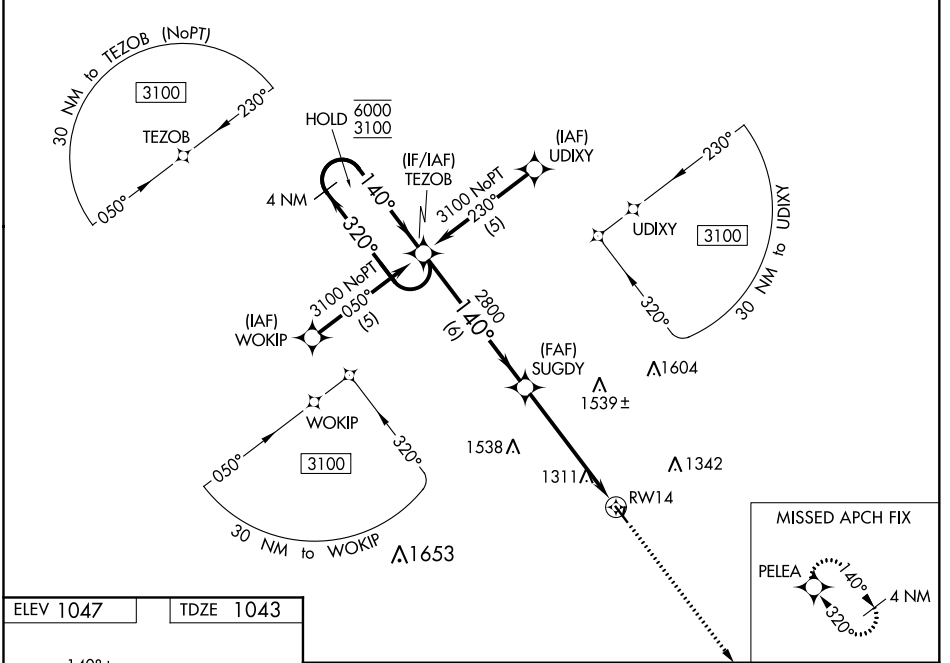
WAAS CH <b>40219</b> <b>W14A</b>	APP CRS <b>140°</b>	Rwy Idg TDZE Apt Elev	<b>4000</b> <b>1043</b> <b>1047</b>
--	------------------------	-----------------------------	---

# RNAV (GPS) RWY 14

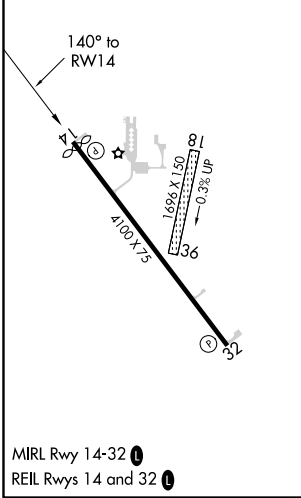
JEFFERSON MUNI (EFW)

RNP APCH-GPS.	MISSED APPROACH: Climb to 3100 direct PELEA and hold.
<p>⚠ Circling NA to Rwy 18 and 36. Rwy 14 helicopter visibility reduction below 3/4 SM NA. Baro-VNAV NA. Use Perry altimeter setting, when not received, use Carrol altimeter setting and increase LPV DA to 1362 feet, increase LNAV/VNAV DA to 1691 feet and visibility 1/8 SM. Increase all MDA 40 feet.</p>	

PRO AWOS-3 <b>118.0</b>	MINNEAPOLIS CENTER <b>134.0 288.3</b>	UNICOM <b>122.8 (CTAF) 0</b>
----------------------------	--	---------------------------------



ELEV 1047	TDZE 1043
-----------	-----------



4 NM Holding Pattern		VGSI and RNAV glidepath not coincident (VGSI Angle 3.00/TCH 33).		3100	PELEA
6000 ← 320°		TEZOBS		↑	✧
3100 → 140°		SUGDY			
GP 3.00°		2800			
TCH 40		2800			
		6 NM		5.4 NM	
CATEGORY	A	B	C	D	
LPV DA	1330-1	287 (300-1)		NA	
LNAV/VNAV DA	1659-1 3/4	616 (700-1 3/4)		NA	
LNAV MDA	1600-1	557 (600-1)		NA	
CIRCLING	1600-1	1660-1		NA	
	553 (600-1)	613 (700-1)			

NC-3, 16 JUN 2022 to 14 JUL 2022

NC-3, 16 JUN 2022 to 14 JUL 2022