

WAAS CH <b>86725</b> <b>W22A</b>	APP CRS <b>223°</b>	Rwy Idg TDZE Apt Elev	<b>6000</b> <b>257</b> <b>257</b>
--	------------------------	-----------------------------	---

# RNAV (GPS) RWY 22

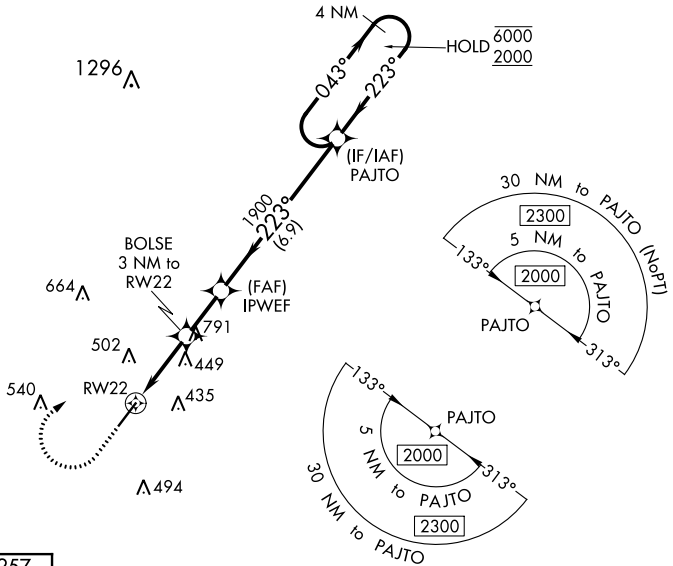
DOUGLAS MUNI (DQH)

RNP APCH.

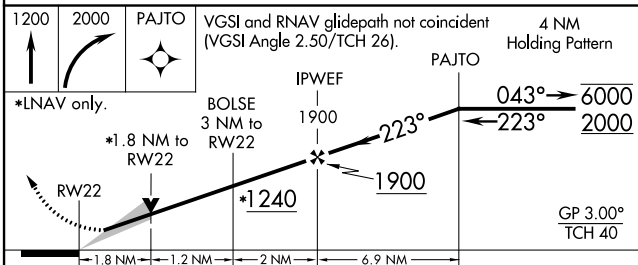
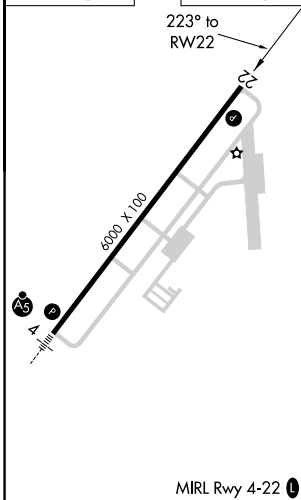
**⚠** For uncompensated Baro-VNAV systems, LNAV/VNAV NA below -15°C or above 54°C.

**MISSED APPROACH:** Climb to 1200 then climbing right turn to 2000 direct PAJTO and hold.

AWOS-3 <b>119.075</b>	JACKSONVILLE CENTER <b>127.575 269.025</b>	UNICOM <b>122.8 (CTAF) 0</b>
--------------------------	---	---------------------------------



ELEV 257	TDZE 257
----------	----------



CATEGORY	A	B	C	D
LPV DA		507- <sup>3</sup> / <sub>4</sub>	250 (300- <sup>3</sup> / <sub>4</sub> )	
LNAV/VNAV DA		567- <sup>7</sup> / <sub>8</sub>	310 (400- <sup>7</sup> / <sub>8</sub> )	
LNAV MDA	760-1	503 (600-1)	760-1 <sup>3</sup> / <sub>8</sub>	503 (600-1 <sup>3</sup> / <sub>8</sub> )
<b>C</b> CIRCLING	760-1 503 (600-1)	820-1 563 (600-1)	960-2 703 (800-2)	1160-3 903 (1000-3)

SE-4, 16 JUN 2022 to 14 JUL 2022

SE-4, 16 JUN 2022 to 14 JUL 2022