

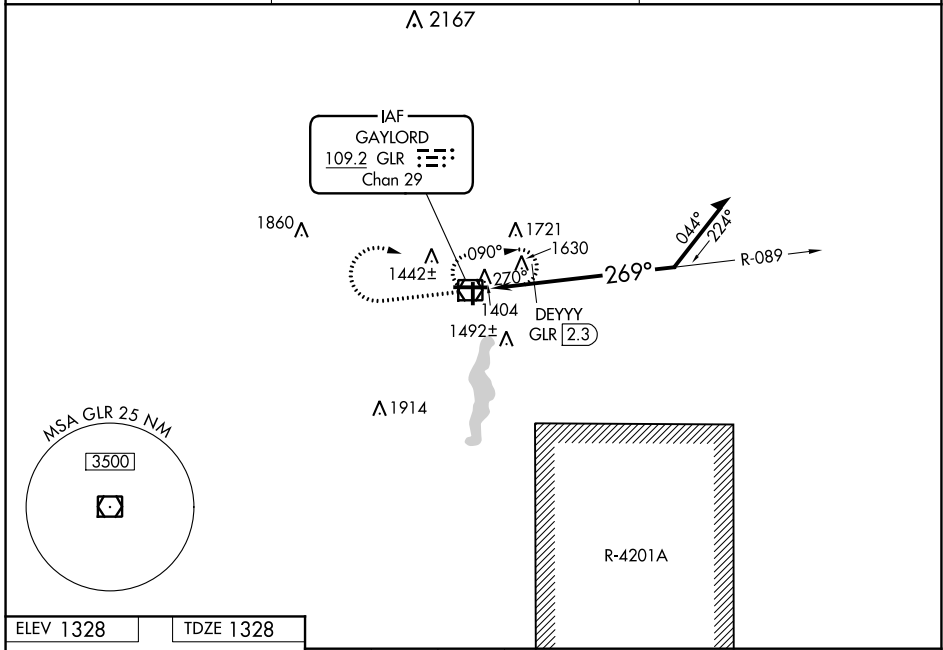
VOR/DME GLR <b>109.2</b> Chan <b>29</b>	APP CRS <b>269°</b>	Rwy Idg TDZE Apt Elev	<b>6579</b> <b>1328</b> <b>1328</b>
---	------------------------	-----------------------------	---

**VOR RWY 27**  
GAYLORD RGNL (GLR)

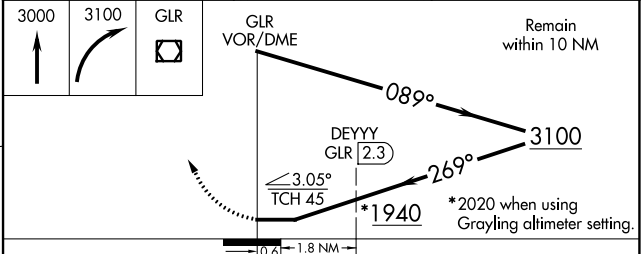
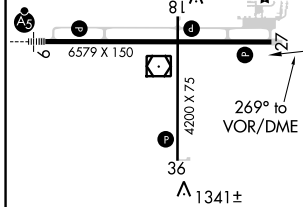
**⚠** Circling Rwy 18, 36 NA at night. Rwy 27 helicopter visibility reduction below 3/4 SM NA. When local altimeter setting not received, use Grayling altimeter setting and increase all MDA 80 feet. Increase S-27 and Circling Cat C/D visibility 1/4 mile. Increase DEYYY FIX minimums S-27 and Circling Cat C/D visibility 1/4 mile.

**MISSED APPROACH:**  
Climb to 3000 then climbing right turn to 3100 direct GLR VOR/DME and hold.

ASOS <b>118.375</b>	MINNEAPOLIS CENTER <b>134.6 354.05</b>	UNICOM <b>122.8 (CTAF)</b>
------------------------	---	-------------------------------



ELEV 1328	TDZE 1328
-----------	-----------



CATEGORY	A		B		C		D	
	S-27	1940-1	612 (700-1)	1940-1 3/4	612 (700-1 3/4)	2040-2	712 (800-2)	2080-2 1/2
DEYYY FIX MINIMUMS								
S-27	1880-1	552 (600-1)	1880-1 5/8	552 (600-1 5/8)				
CIRCLING	1880-1	552 (600-1)	1940-1	612 (700-1)	2040-2	712 (800-2)	2080-2 1/2	752 (800-2 1/2)

HIRL Rwy 9-27 **Ⓛ**  
MIRL Rwy 18-36 **Ⓛ**  
REIL Rwy 18, 27 and 36 **Ⓛ**

EC-1, 16 JUN 2022 to 14 JUL 2022

EC-1, 16 JUN 2022 to 14 JUL 2022