

WAAS CH <b>90516</b> <b>W32A</b>	APP CRS <b>321°</b>	Rwy Idg <b>3851</b> TDZE <b>1122</b> Apt Elev <b>1122</b>
--	------------------------	---

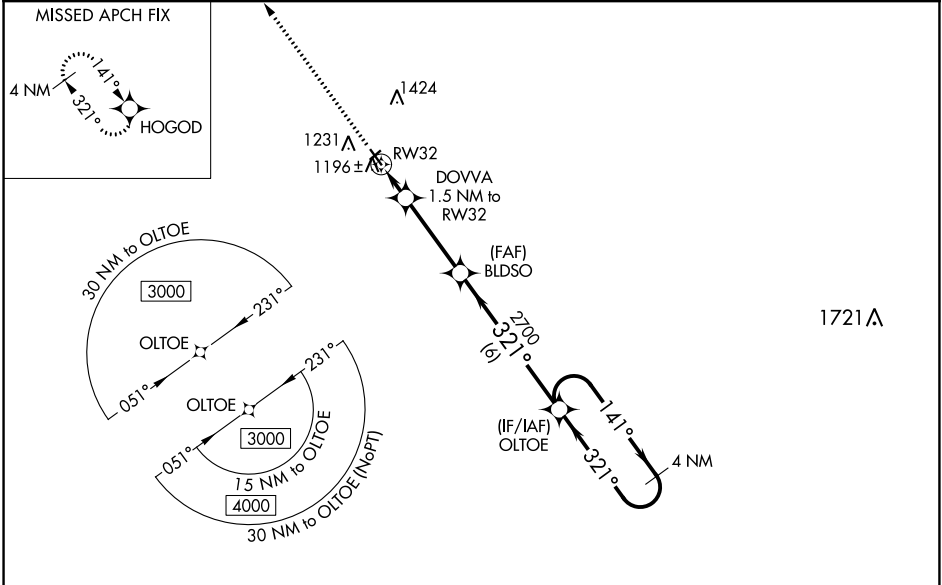
# RNAV (GPS) RWY 32

WEBSTER CITY MUNI (EBS)

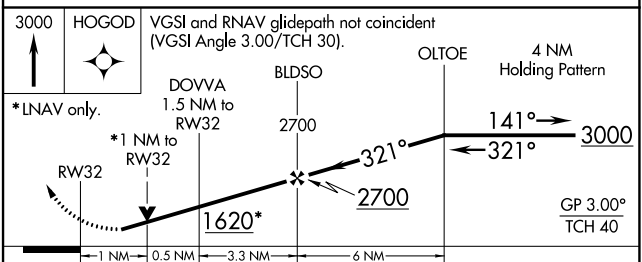
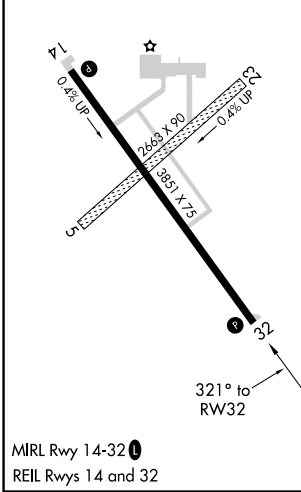
**⚠** For uncompensated Baro-VNAV systems, LNAV/VNAV NA below -17°C (2°F) or above 54°C (130°F). DME/DME RNP-0.3 NA. When local altimeter setting not received, use Clarion altimeter setting and increase all DA 49 feet and all MDA 60 feet. Baro-VNAV and VDP NA when using Clarion altimeter setting. Helicopter visibility reduction below 3/4 SM NA.

MISSED APPROACH: Climb to 3000 direct HOGOD and hold.

AWOS-3 <b>127.825</b>	MINNEAPOLIS CENTER <b>134.0 288.3</b>	UNICOM <b>122.8 (CTAF) 0</b>
--------------------------	--	---------------------------------



ELEV 1122	TDZE 1122
-----------	-----------



CATEGORY	A	B	C	D
LPV DA	1372-1	250 (300-1)		NA
LNAV/VNAV DA	1372-1	250 (300-1)		NA
LNAV MDA	1460-1	338 (400-1)		NA
<b>C</b> CIRCLING	1600-1	478 (500-1)		NA

NC-3, 16 JUN 2022 to 14 JUL 2022

NC-3, 16 JUN 2022 to 14 JUL 2022