

VORTAC FOD 113.5 Chan 82	APP CRS 112°	Rwy Idg TDZE 1117 Apt Elev 1122	3851
--	------------------------	---	-------------

VOR/DME RWY 14

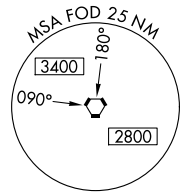
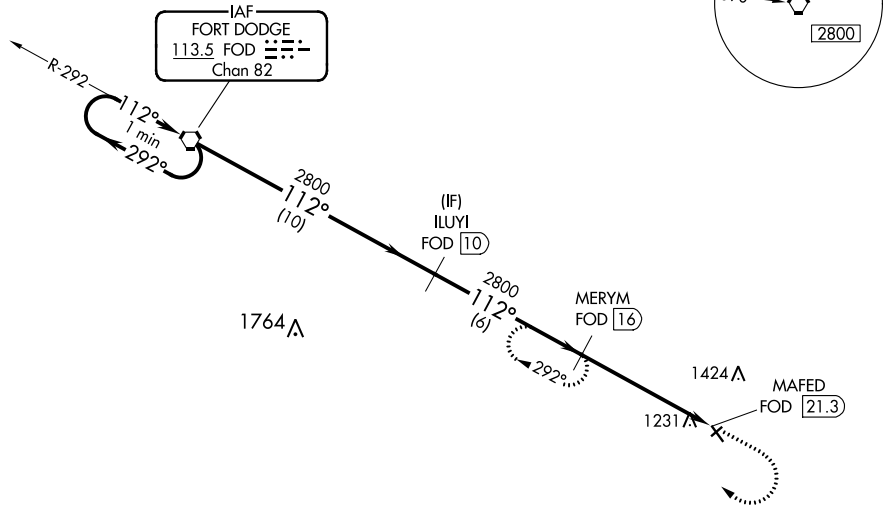
WEBSTER CITY MUNI (EBS)

⚠ When local altimeter setting not received, use Clarion altimeter setting and increase all MDA 60 feet.
⚠ Helicopter visibility reduction below 3/4 SM not authorized.

MISSED APPROACH: Climb to 2800 then right turn on FOD VORTAC R-112 to MERYM/16 DME and hold.

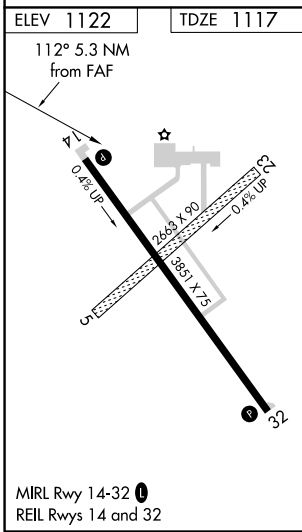
AWOS-3 127.825	MINNEAPOLIS CENTER 134.0 288.3	UNICOM 122.8 (CTAF) 0
--------------------------	--	---------------------------------

NoPT for arrival on FOD VORTAC
 airway radials 215 CW 048.



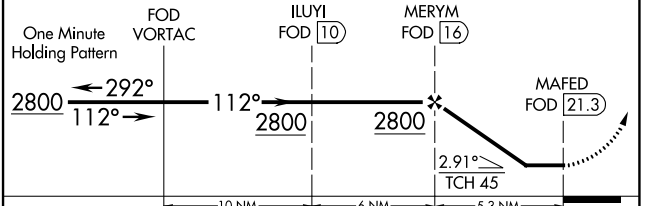
NC-3, 16 JUN 2022 to 14 JUL 2022

NC-3, 16 JUN 2022 to 14 JUL 2022



VGSI and descent angles not coincident (VGSI Angle 3.25/TCH 25).

2800	FOD R-112	MERYM FOD 16
------	-----------	--------------



CATEGORY	A	B	C	D
S-14	1680-1	563 (600-1)		NA
C CIRCLING	1680-1	558 (600-1)		NA