

WAAS CH 53625 W35A	APP CRS 347°	Rwy Idg 5000 TDZE 1261 Apt Elev 1261
--	------------------------	---

RNAV (GPS) RWY 35

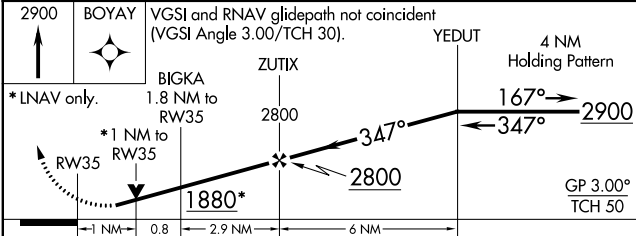
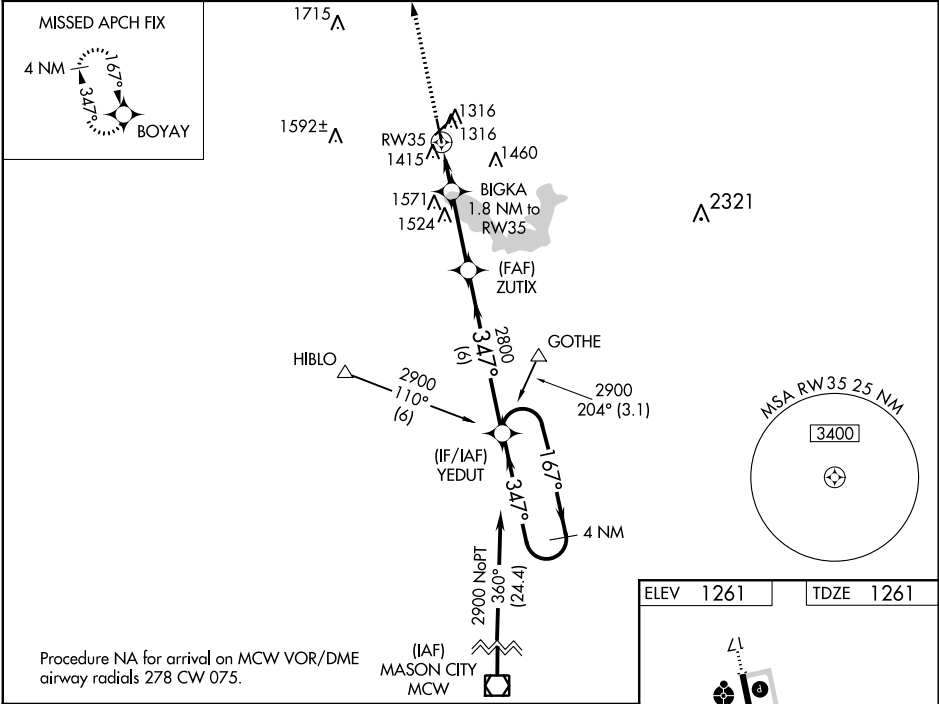
ALBERT LEA MUNI (A.E.L.)

RNP APCH.

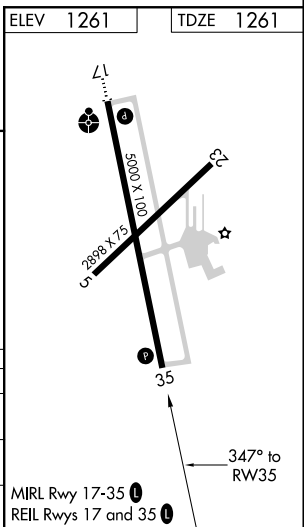
⚠ Baro-VNAV NA when using Austin altimeter setting. For uncompensated Baro-VNAV systems, LNAV/VNAV NA below -28°C or above 36°C. VDP NA with Austin altimeter setting. Rwy 35 helicopter visibility reduction below 3/4 SM NA. When local altimeter setting not received, use Austin altimeter setting and increase all DA 48 feet and all MDA 60 feet; increase LPV and LNAV/VNAV visibility 1/4 mile all Cats.

MISSED APPROACH: Climb to 2900 direct BOYAY and hold.

AWOS-3 109.8	ROCHESTER APP CON * 119.8 251.125	UNICOM 123.0 (CTAF)
------------------------	---	-------------------------------



CATEGORY	A	B	C	D
LPV DA	1511-3/4		250 (300-3/4)	
LNAV/VNAV DA	1576-1		315 (400-1)	
LNAV MDA	1720-1	459 (500-1)	1720-1 3/8	459 (500-1 3/8)



NC-1, 16 JUN 2022 to 14 JUL 2022

NC-1, 16 JUN 2022 to 14 JUL 2022