

LOC I-ENW 109.35	APP CRS 068°	Rwy ldg 6600
		TDZE 742
		Apt Elev 742

ILS or LOC RWY 7L

KENOSHA RGNL (ENW)

DME required for LOC only. RNAV 1-GPS required.

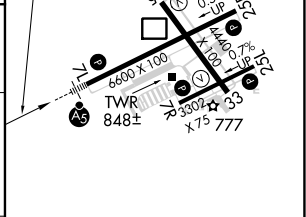
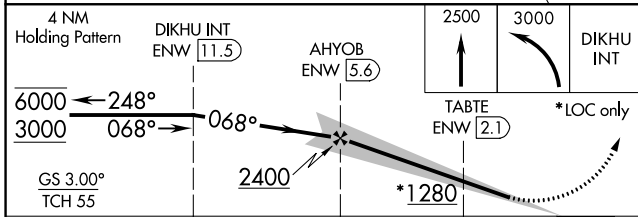
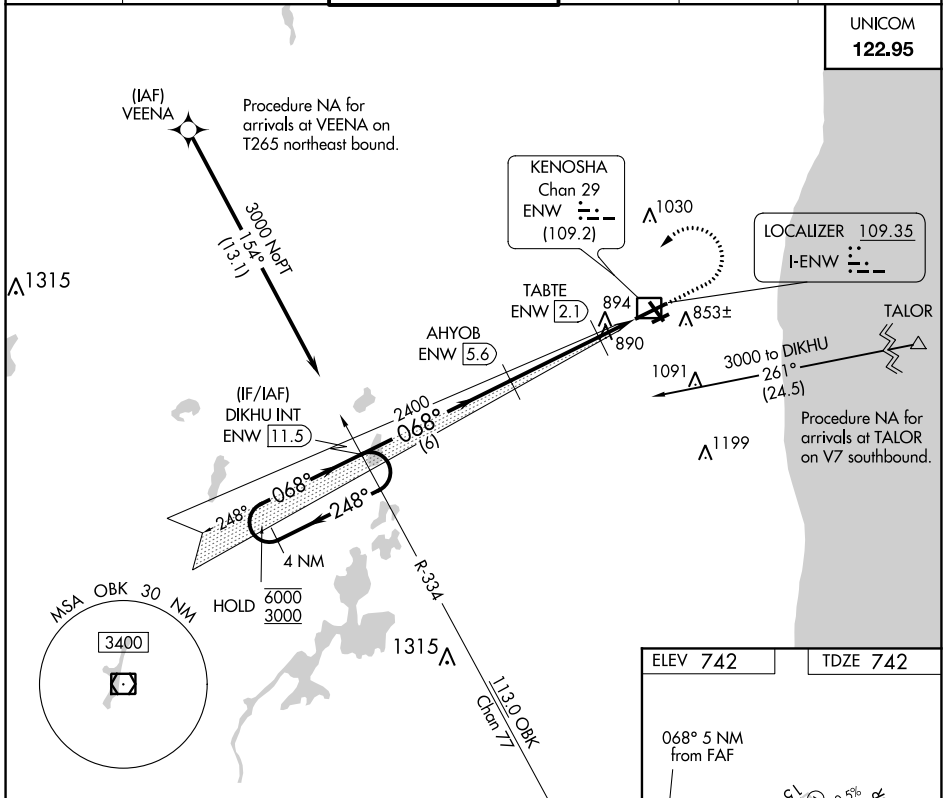
⚠ Circling Rwy 7R, 15 NA at night.

MALS

MISSED APPROACH: Climb to 2500 then climbing left turn to 3000 direct DIKHU and hold.

ATIS 127.175	MILWAUKEE APP CON 135.875 317.725	KENOSHA TOWER * 118.6 (CTAF) 0 353.6	GND CON 121.875	CLNC DEL 121.875	CLNC DEL 118.6 (When twr closed)
------------------------	---	--	---------------------------	----------------------------	---

UNICOM
122.95



CATEGORY	A	B	C	D
S-ILS 7L	942-1/2 200 (200-1/2)			
S-LOC 7L	1140-1/2	398 (400-1/2)	1140-3/4	398 (400-3/4)
C CIRCLING	1200-1 458 (500-1)	1340-1 598 (600-1)	1400-1 3/4 658 (700-1 3/4)	1440-2 1/4 698 (700-2 1/4)

MIRL Rwy 7R-25L	
HIRL Rwy 7L-25R and 15-33	
REIL Rwy 25R	
FAF to MAP 5 NM	
Knots	60 90 120 150 180
Min:Sec	5:00 3:20 2:30 2:00 1:40

EC-3, 16 JUN 2022 to 14 JUL 2022

EC-3, 16 JUN 2022 to 14 JUL 2022