

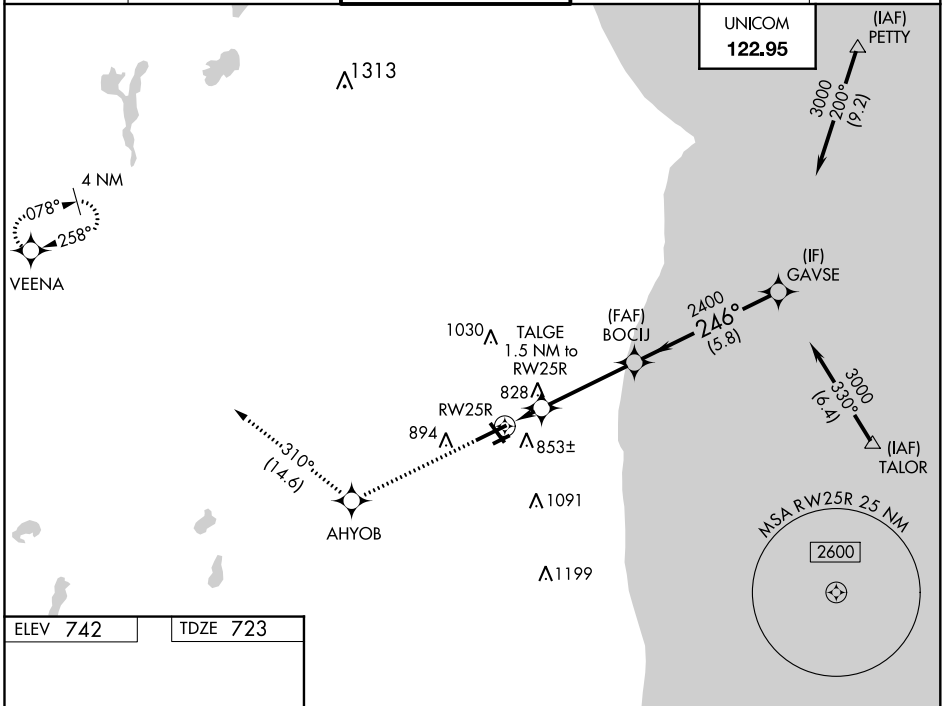
WAAS CH 49014 W25A	APP CRS 246°	Rwy Ldg TDZE 723 Apt Elev 742	6600
--	------------------------	---	-------------

RNAV (GPS) RWY 25R

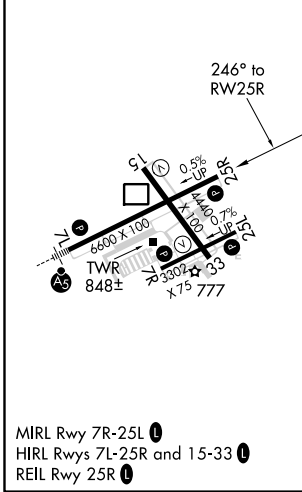
KENOSHA RGNL (ENW)

RNP APCH.		MISSED APPROACH: Climb to 3000 direct AHYOB and on track 310° to VEENA and hold.			
<p>⚠ Circling Rwy 7R, 15 NA at night. For uncompensated Baro-VNAV systems, LNAV/VNAV NA below -23°C or above 54°C.</p>					

ATIS 127.175	MILWAUKEE APP CON 135.875 317.725	KENOSHA TOWER ★ 118.6 (CTAF) 0 353.6	GND CON 121.875	CLNC DEL 121.875	CLNC DEL 118.6 (When twr closed)
------------------------	---	--	---------------------------	----------------------------	---



ELEV 742	TDZE 723
-----------------	-----------------



3000	AHYOB	tr 310°	VEENA	GAVSE	
*LNAV only		TALGE 1.5 NM to RW25R	BOCIJ	2400	3000
RW25R		*1220	2400	GP 3.00° TCH 45	
1.5 NM		3.7 NM	5.8 NM		
CATEGORY	A	B	C	D	
LPV DA	923- ³ / ₄		200 (200- ³ / ₄)		
LNAV/VNAV DA	984- ⁷ / ₈		261 (300- ⁷ / ₈)		
LNAV MDA	1080-1		357 (400-1)		
<input checked="" type="checkbox"/> CIRCLING	1200-1 458 (500-1)	1340-1 598 (600-1)	1400-1 ³ / ₄ 658 (700-1 ³ / ₄)	1440-2 ¹ / ₄ 698 (700-2 ¹ / ₄)	

EC-3, 16 JUN 2022 to 14 JUL 2022

EC-3, 16 JUN 2022 to 14 JUL 2022