

(MEARZ7.MEARZ) 22139  
**MEARZ SEVEN DEPARTURE**

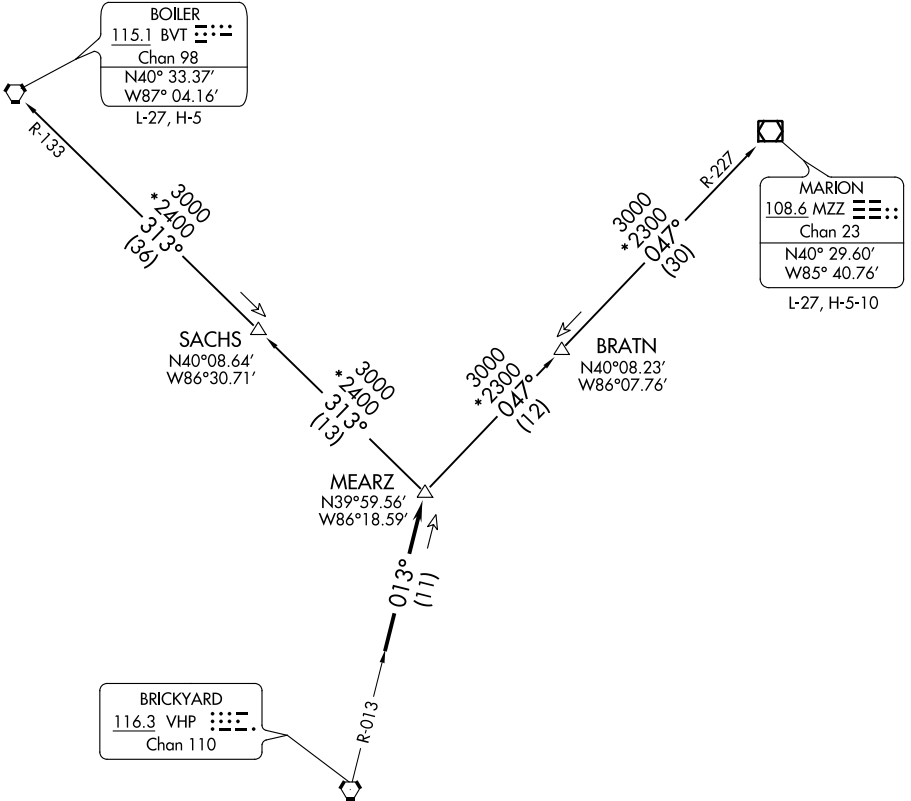
AL-5514 (FAA)

SHELBYVILLE MUNI (GEZ)  
 SHELBYVILLE, INDIANA

**TOP ALTITUDE:  
 ASSIGNED BY ATC**

RADAR required.

ASOS  
 121.55  
 INDIANAPOLIS DEP CON  
 127.15 317.8



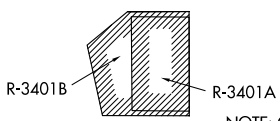
EC-2, 16 JUN 2022 to 14 JUL 2022

EC-2, 16 JUN 2022 to 14 JUL 2022

**TAKEOFF MINIMUMS**

Rwy 1, 19: Standard.  
 Rwy 9, 27: NA - Environmental

- NOTE: Turbojets accelerate to 250K until reaching 10000, if unable advise ATC.
- NOTE: Assigned to aircraft with a requested altitude of 11000 or above.
- NOTE: Select appropriate localizer/DME frequency/channel prior to departure.



NOTE: Chart not to scale.

(NARRATIVE ON FOLLOWING PAGE)

**MEARZ SEVEN DEPARTURE**  
 (MEARZ7.MEARZ) 19MAY22

SHELBYVILLE, INDIANA  
 SHELBYVILLE MUNI (GEZ)



DEPARTURE ROUTE DESCRIPTION

DEPARTING ALL OTHER AUTHORIZED RUNWAYS: Climb on assigned heading to assigned altitude. Thence....

....expect RADAR vectors to join VHP R-013 to MEARZ then on transition or assigned route. Expect clearance to requested altitude ten minutes after departure.

BOILER TRANSITION (MEARZ.BVT): From over MEARZ on BVT R-133 to BVT VORTAC.

MARION TRANSITION (MEARZ.MZZ): From over MEARZ on MZZ R-227 to MZZ VOR/DME.

EC-2, 16 JUN 2022 to 14 JUL 2022

EC-2, 16 JUN 2022 to 14 JUL 2022