

WAAS CH 53603 W19A	APP CRS 189°	Rwy Idg TDZE Apt Elev	5000 803 803
--	------------------------	-----------------------------	---

RNAV (GPS) RWY 19

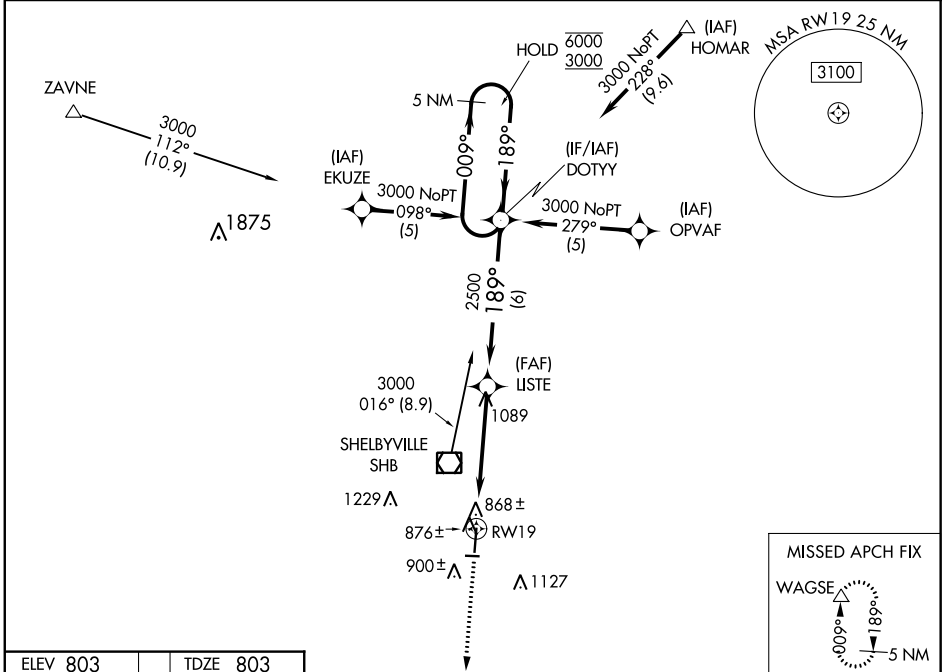
SHELBYVILLE MUNI (G/EZ)

RNP APCH:

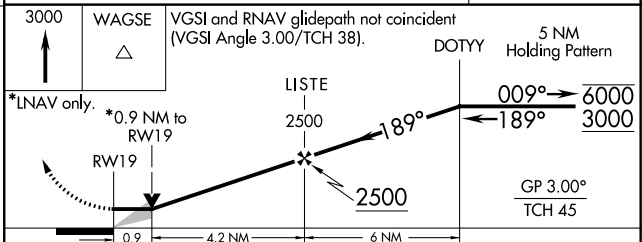
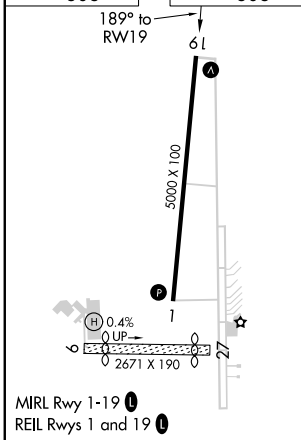
⚠ Circling Rwy 9, 27 NA at night. Baro-VNAV NA when using Indianapolis Intl altimeter setting. For uncompensated Baro-VNAV systems, LNAV/VNAV NA below -16°C or above 54°C. VDP NA when using Indianapolis Intl altimeter setting. When local altimeter setting not received, use Indianapolis Intl altimeter setting: increase LPV DA to 1152 feet and LNAV/VNAV DA to 1199 feet; increase all MDA 60 feet and LNAV Cat C/D visibility 1/8 SM and Circling Cat D visibility 1/4 SM.

MISSED APPROACH:
Climb to 3000 direct WAGSE and hold.

ASOS 121.55	INDIANAPOLIS APP CON 127.15 317.8	UNICOM 122.8 (CTAF) 0
-----------------------	---	---------------------------------



ELEV 803	TDZE 803
----------	----------



CATEGORY	A	B	C	D
LPV DA	1095-1 292 (300-1)			
LNAV/VNAV DA	1142-1¼ 339 (400-1¼)			
LNAV MDA	1140-1 337 (400-1)			
CIRCLING	1240-1	1480-1	1480-2	1540-2¼
	437 (500-1)	677 (700-1)	677 (700-2)	737 (800-2¼)

EC-2, 16 JUN 2022 to 14 JUL 2022

EC-2, 16 JUN 2022 to 14 JUL 2022