

(ROCKY1.ROCKY) 1803Z

ROCKY ONE DEPARTURE

AL-5514 (FAA)

SHELBYVILLE MUNI(GEZ)

SHELBYVILLE, INDIANA

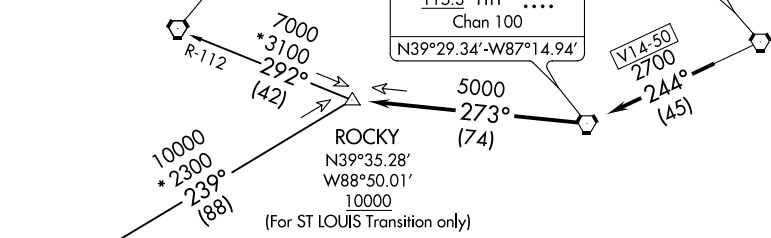
ASOS
121.55
INDIANAPOLIS DEP CON
127.15 317.8

**TOP ALTITUDE:
ASSIGNED BY ATC**

SPINNER
112.7 SPI $\text{---}\cdot\text{---}\cdot\text{---}\cdot\text{---}\cdot$
Chan 74
N39°50.38'-W89°40.66'
L-27, H-5

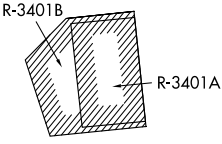
TERRE HAUTE
115.3 TTH $\text{---}\cdot\text{---}\cdot\text{---}\cdot\text{---}\cdot$
Chan 100
N39°29.34'-W87°14.94'

BRICKYARD
116.3 VHP $\text{---}\cdot\text{---}\cdot\text{---}\cdot\text{---}\cdot$
Chan 110



TAKEOFF MINIMUMS
Rwys 1, 19: Standard.
Rwys 9, 27: NA - Environmental.

ST LOUIS
117.4 STL $\text{---}\cdot\text{---}\cdot\text{---}\cdot\text{---}\cdot$
Chan 121
N38°51.64'-W90°28.94'
L-27, H-5



- NOTE: RADAR required.
- NOTE: Select appropriate localizer/DME frequency/channel prior to departure.
- NOTE: Turbojets accelerate to 250K until reaching 10000, if unable advise ATC.
- NOTE: Assigned to aircraft with a requested altitude of 11000 or above.

NOTE: Chart not to scale.



DEPARTURE ROUTE DESCRIPTION

DEPARTING ALL OTHER AUTHORIZED RUNWAYS: Climb on assigned heading to assigned altitude. Thence

. . . . expect RADAR vectors to join VHP R-244 to TTH VORTAC, then via TTH R-273 to ROCKY INT then via transition or assigned route. Expect clearance to requested altitude ten minutes after departure.

SPINNER TRANSITION (ROCKY1.SPI): From over ROCKY INT on SPI R-112 to SPI VORTAC.
ST LOUIS TRANSITION (ROCKY1.STL): From over ROCKY INT on STL R-059 to STL VORTAC.

ROCKY ONE DEPARTURE

(ROCKY1.ROCKY) 01FEB18

SHELBYVILLE, INDIANA
SHELBYVILLE MUNI(GEZ)

EC-2, 16 JUN 2022 to 14 JUL 2022

EC-2, 16 JUN 2022 to 14 JUL 2022