

SHELBYVILLE, INDIANA

AL-5514 (FAA)

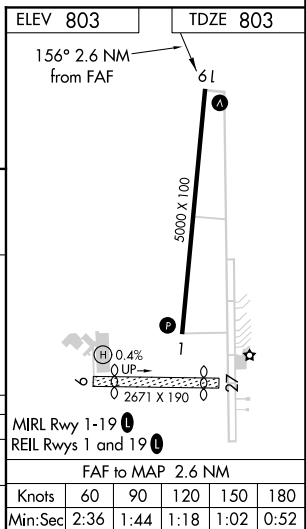
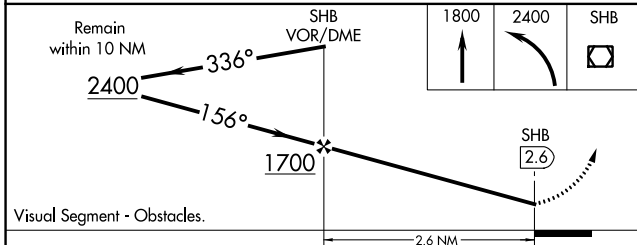
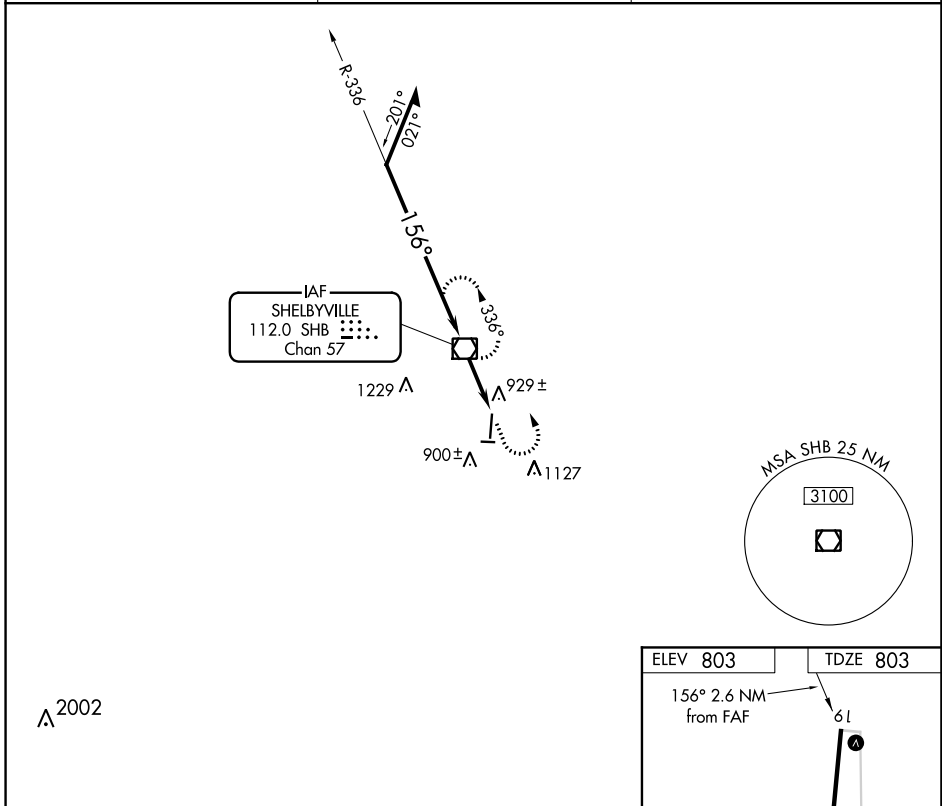
21364

VOR/DME SHB <b>112.0</b> Chan <b>57</b>	APP CRS <b>156°</b>	Rwy Idg TDZE Apt Elev <b>5000</b> <b>803</b> <b>803</b>
---	------------------------	--

**VOR RWY 19**  
SHELBYVILLE MUNI (G/EZ)

**⚠** Circling Rwy 9, 27 NA at night. MISSED APPROACH: Climb to 1800 then climbing left turn to 2400 direct SHB VOR/DME and hold.

ASOS <b>121.55</b>	INDIANAPOLIS APP CON <b>127.15 317.8</b>	UNICOM <b>122.8 (CTAF) 0</b>
-----------------------	---	---------------------------------



EC-2, 16 JUN 2022 to 14 JUL 2022

EC-2, 16 JUN 2022 to 14 JUL 2022

SHELBYVILLE, INDIANA  
Amdt 1C 30DEC21

39°35'N-85°48'W

SHELBYVILLE MUNI (G/EZ)  
**VOR RWY 19**