

WAAS CH <b>56208</b> <b>W26A</b>	APP CRS <b>257°</b>	Rwy Idg <b>4002</b> TDZE <b>1224</b> Apt Elev <b>1228</b>
--	------------------------	---

# RNAV (GPS) RWY 26

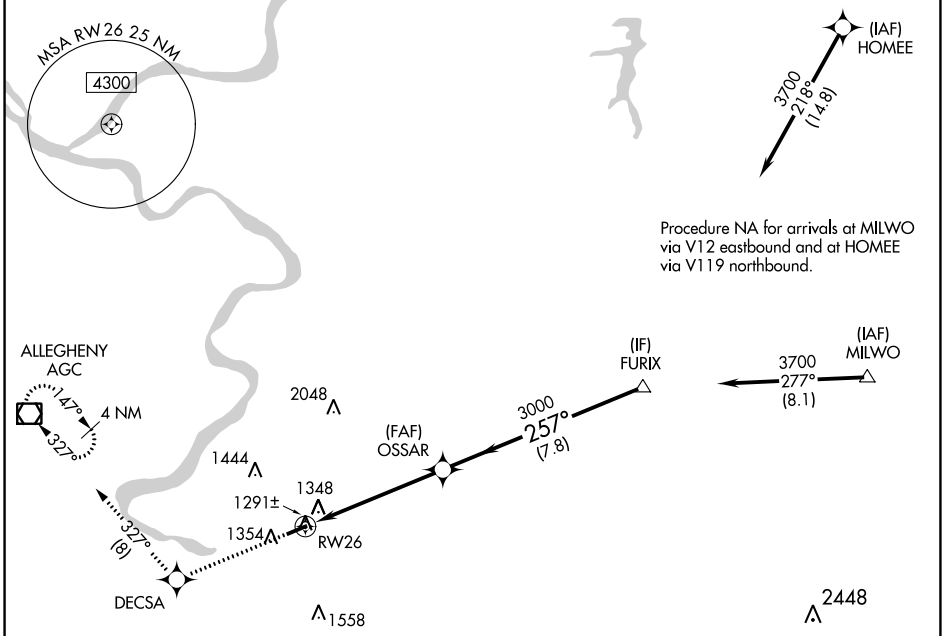
ROSTRAVER (FWQ)

**⚠** DME/DME RNP-0.3 NA. When local altimeter setting not received, use Allegheny County altimeter setting and increase all DA/MDA 40 feet, and increase LNAV Cats C and D visibility to 1½ mile. Rwy 26 helicopter visibility reduction below ¾ SM NA. Rwy 8 helicopter visibility reduction below 1 SM NA. Circling Rwy 8 NA at night.

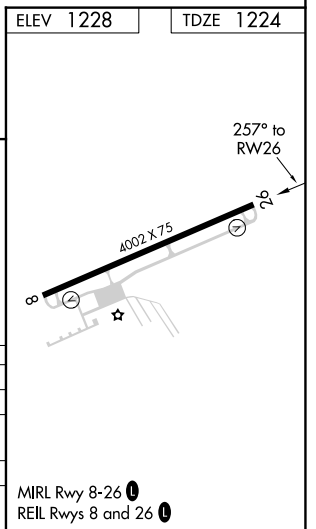
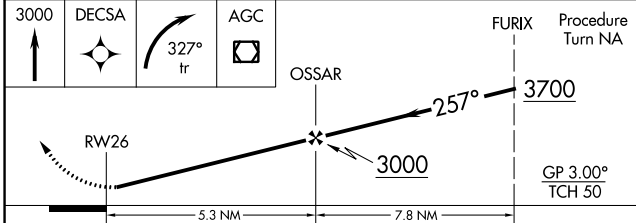
**⚠** NA

**MISSED APPROACH:** Climb to 3000 direct DECSA, and right turn via 327° track to AGC VOR/DME and hold.

AWOS-3 <b>118.475</b>	PITTSBURGH APP CON <b>119.35 337.4</b>	UNICOM <b>122.8 (CTAF) 0</b>
--------------------------	---	---------------------------------



ELEV 1228	TDZE 1224
-----------	-----------



CATEGORY	A	B	C	D
LPV DA	1500-1 276 (300-1)			
LNAV/VNAV DA	NA			
LNAV MDA	1600-1 376 (400-1)			
CIRCLING	1700-1 472 (500-1)	1760-1 532 (600-1)	1760-1½ 532 (600-1½)	1920-2¼ 692 (700-2¼)

NE-4, 16 JUN 2022 to 14 JUL 2022

NE-4, 16 JUN 2022 to 14 JUL 2022