

VOR/DME DTL 111.2 Chan 49	APP CRS 144°	Rwy Idg TDZE Apt Elev	5201 1393 1396
---	------------------------	-----------------------------	---

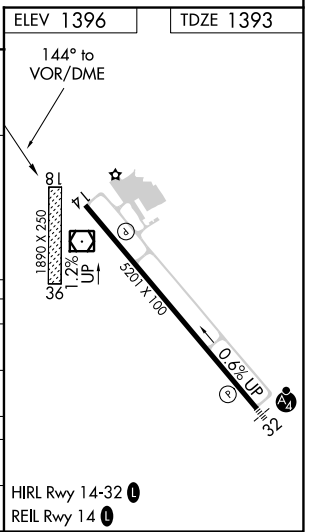
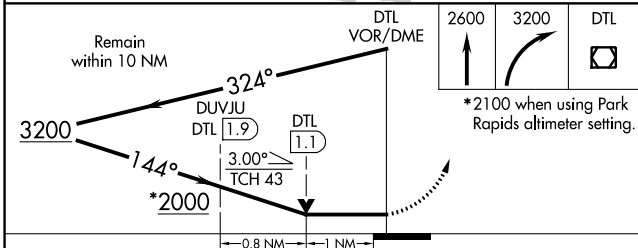
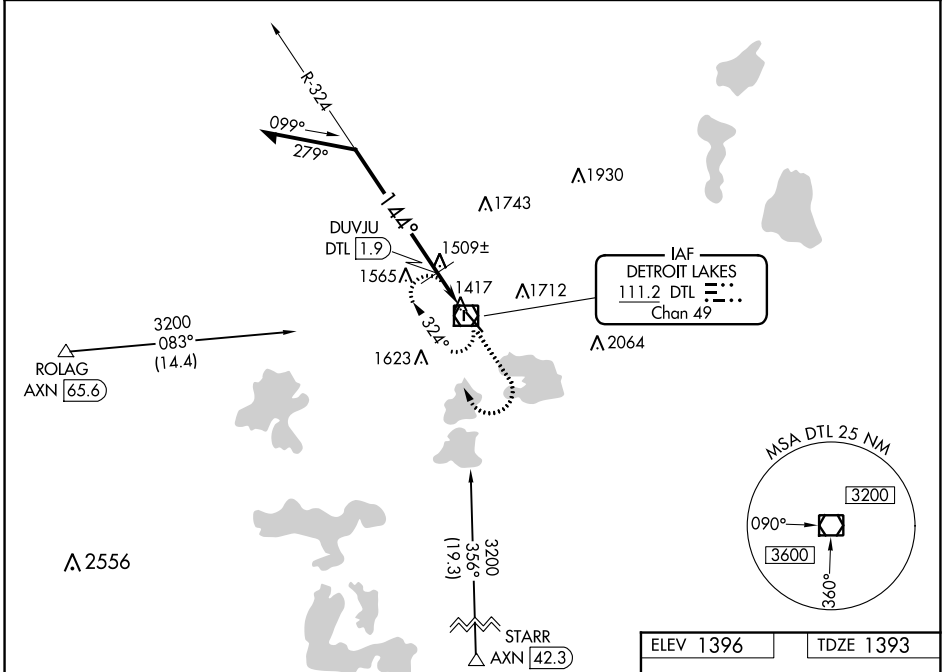
VOR RWY 14

DETROIT LAKES/WETHING FLD (DTL)

NA Circling NA to Rwy 18 and 36. VDP NA with Park Rapids altimeter setting. When local altimeter setting not received, use Park Rapids altimeter setting and increase all MDA 100 feet and visibility Cats C and D ¼ SM. DUVJU fix minimums: increase visibility Cats C and D ⅓ SM.

MISSED APPROACH: Climb to 2600 then climbing right turn to 3200 direct DTL VOR/DME and hold, continue climb-in-hold to 3200.

AWOS-3PT 119.075	MINNEAPOLIS CENTER 126.1 269.2	UNICOM 122.8 (CTAF) 0
----------------------------	--	---------------------------------



CATEGORY	A	B	C	D
S-14	2000-1	607 (700-1)	2000-1¾	607 (700-1¾)
C CIRCLING	2000-1	604 (700-1)	2080-2 684 (700-2)	2140-2½ 744 (800-2½)
DUVJU FIX MINIMUMS				
S-14	1760-1		367 (400-1)	
C CIRCLING	1820-1 424 (500-1)	1860-1 464 (500-1)	2080-2 684 (700-2)	2140-2½ 744 (800-2½)

NC-1, 16 JUN 2022 to 14 JUL 2022

NC-1, 16 JUN 2022 to 14 JUL 2022