

WAAS CH 90238 W28A	APP CRS 281°	Rwy Idg TDZE Apt Elev	4103 796 800
--	------------------------	-----------------------------	---

RNAV (GPS) RWY 28

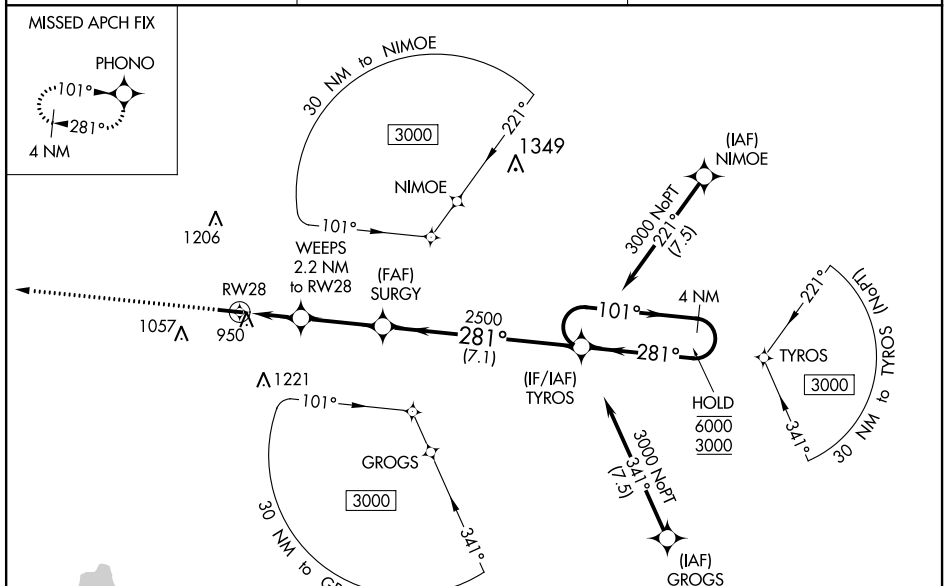
PLYMOUTH MUNI (C65)

RNP APCH.

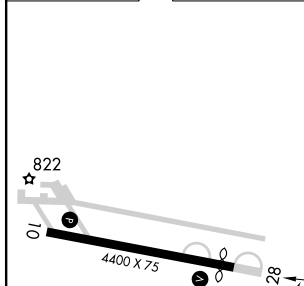
▼ Baro-VNAV and VDP NA when using South Bend altimeter setting. Rwy 28 helicopter visibility reduction below 3/4 SM NA. For uncompensated Baro-VNAV systems, LNAV/VNAV NA below -16°C or above 54°C. When local altimeter not received, use South Bend altimeter setting and increase LPV DA to 1147 feet and visibility all Cats 1/8 SM, LNAV/VNAV DA to 1225 feet and visibility all Cats 1/4 SM, all MDA 60 feet and LNAV and Circling Cat C visibility 1/4 SM.

MISSED APPROACH: Climb to 3000 direct PHONO and hold.

AWOS-3 133.025	SOUTH BEND APP CON * 132.05 257.8	UNICOM 122.975 (CTAF) 0
--------------------------	---	-----------------------------------



ELEV 800	TDZE 796
----------	----------



CATEGORY	A	B	C	D
LPV DA	1099-1		303 (300-1)	NA
LNAV/VNAV DA	1177-1¼		381 (400-1¼)	NA
LNAV MDA	1260-1	464 (500-1)	1260-13/8 464 (500-13/8)	NA
C CIRCLING	1280-1 480 (500-1)	1360-1 560 (600-1)	1540-2 740 (800-2)	NA

MIRL Rwy 10-28 0

REIL Rwy 10 and 28 0

EC-2, 16 JUN 2022 to 14 JUL 2022

EC-2, 16 JUN 2022 to 14 JUL 2022