

VOR/DME OXI 115.6 Chan 103	APP CRS 261°	Rwy Idg TDZE 796 Apt Elev 800	4103
--	------------------------	---	-------------

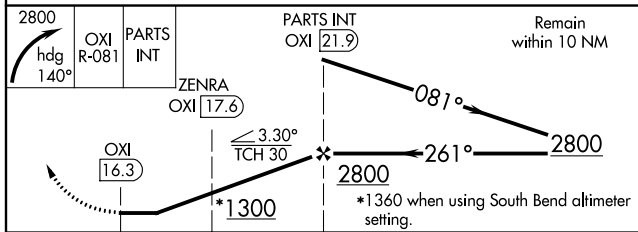
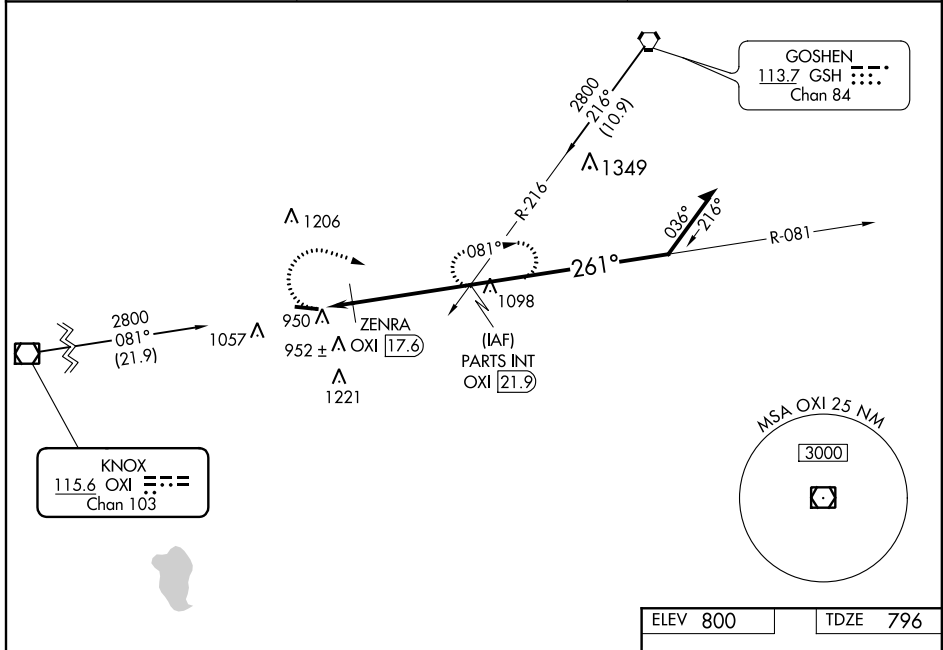
VOR RWY 28

PLYMOUTH MUNI (C65)

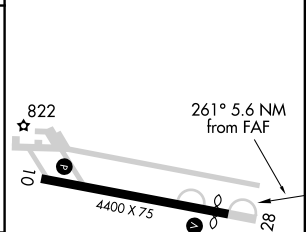
▼ Rwy 28 helicopter visibility reduction below 3/4 SM NA. When local altimeter setting not received, use South Bend altimeter setting and increase all MDAs 60 feet and S-28 Cat C and Circling Cat C visibility 1/4 SM; increase ZENRA fix minimums S-28 Cat C visibility 1/8 SM and Circling Cat C visibility 1/4 SM.

MISSED APPROACH: Climbing right turn to 2800 on heading 140° and OXI VOR/DME R-081 direct PARTS INT/OXI 21.9 DME and hold.

AWOS-3 133.025	SOUTH BEND APP CON * 132.05 257.8	UNICOM 122.975 (CTAF) 📻
--------------------------	---	--



ELEV 800	TDZE 796
----------	----------



CATEGORY	A	B	C	D
S-28	1300-1	504 (500-1)	1300-1 3/8 504 (500-1 3/8)	NA
C CIRCLING	1300-1 500 (500-1)	1360-1 560 (600-1)	1540-2 740 (800-2)	NA
ZENRA FIX MINIMUMS (DME REQUIRED)				
S-28	1220-1	424 (500-1)	1220-1 1/4 424 (500-1 1/4)	NA
C CIRCLING	1280-1 480 (500-1)	1360-1 560 (600-1)	1540-2 740 (800-1)	NA

MIRL Rwy 10-28 **📻**
REIL Rwys 10 and 28 **📻**

FAF to MAP 5.6 NM

Knots	60	90	120	150	180
Min:Sec	5:36	3:44	2:48	2:14	1:52

EC-2, 16 JUN 2022 to 14 JUL 2022

EC-2, 16 JUN 2022 to 14 JUL 2022