

NDB SLP	APP CRS	Rwy Idg	<b>5001</b>
<b>417</b>	<b>218°</b>	TDZE	<b>847</b>
		Apt Elev	<b>847</b>

# NDB RWY 23

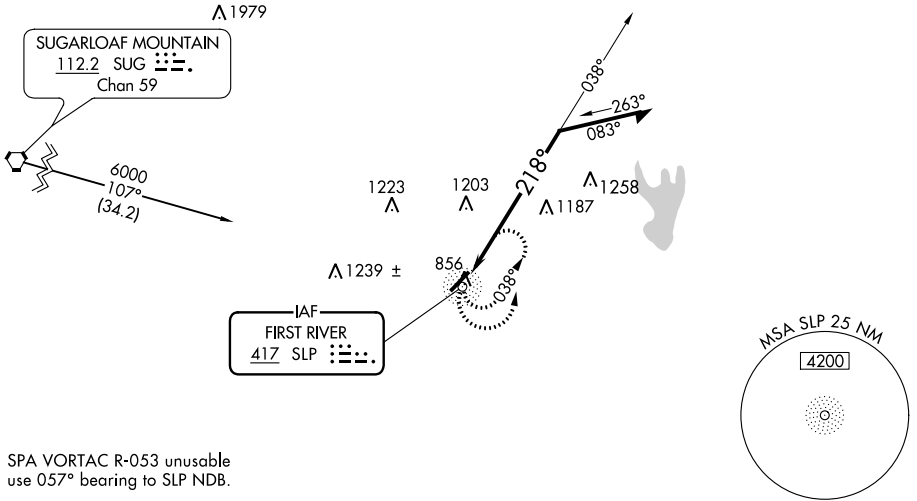
SHELBY-CLEVELAND COUNTY RGNL (EHO)

**⚠** Helicopter visibility reduction below 1 SM NA. When local altimeter setting not received, use Charlotte altimeter setting and increase all MDA 100 feet and S-23 Cat C and D visibility ¼ mile and Circling Cat C and D visibility ¼ mile. RWY 23 Straight-in and Circling and Circling to Rwy 5 NA at night.

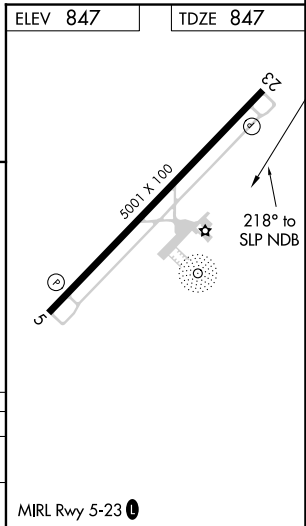
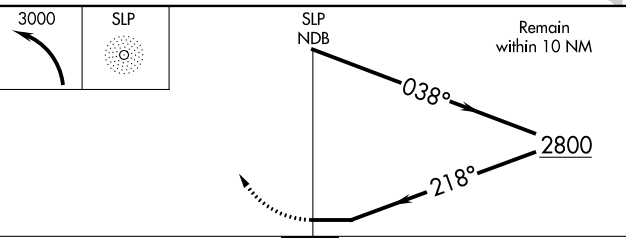
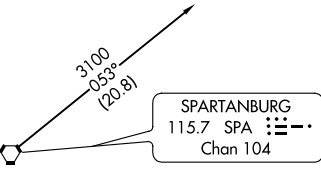
**MISSED APPROACH:** Climbing left turn to 3000 in SLP NDB holding pattern.

AWOS-3 <b>118.425</b>	CHARLOTTE APP CON <b>120.05 257.2</b>	UNICOM <b>122.8 (CTAF) 0</b>
--------------------------	--	---------------------------------

2280°



SPA VORTAC R-053 unusable use 057° bearing to SLP NDB.



CATEGORY	A	B	C	D
S-23	1620-1 773 (800-1)	1620-1¼ 773 (800-1¼)	1620-2¼ 773 (800-2¼)	1620-2½ 773 (800-2½)
CIRCLING	1620-1 773 (800-1)	1620-1¼ 773 (800-1¼)	1620-2¼ 773 (800-2¼)	1620-2½ 773 (800-2½)

MIRL Rwy 5-23 0

SE-2, 16 JUN 2022 to 14 JUL 2022

SE-2, 16 JUN 2022 to 14 JUL 2022