

WAAS CH 63124 W05A	APP CRS 050°	Rwy Idg TDZE Apt Elev	5001 847 847
--	------------------------	-----------------------------	---

RNAV (GPS) RWY 5

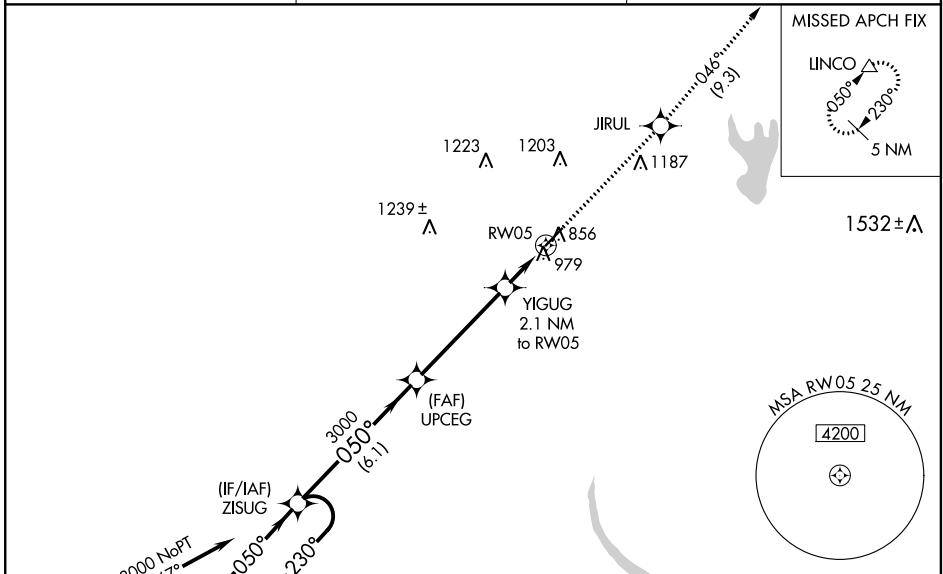
SHELBY-CLEVELAND COUNTY RGNL (EHO)

RNP APCH.

▽ Baro-VNAV NA when using Charlotte altimeter setting. For uncompensated Baro-VNAV systems, LNAV/VNAV NA below -16°C or above 38°C. Rwy 5 helicopter visibility reduction below 3/4 SM NA. When local altimeter setting not received, use Charlotte altimeter setting and increase all DA 88 feet and all MDA 100 feet; increase LPV all Cats visibility 1/8 SM and LNAV/VNAV all Cats, LNAV Cat C/D visibility 1/4 SM.

▲ MISSED APPROACH: Climb to 4000 direct JIRUL and on track 046° to LINCO and hold.

AWOS-3 118.425	CHARLOTTE APP CON 120.05 257.2	UNICOM 122.8 (CTAF) 0
--------------------------	--	---------------------------------



SPARTANBURG SPA (IAF) Procedure NA for arrivals on SPA VORTAC airway radials 360 CW 103.

(IF/IAF) ZISUG 3000 NoPT 067° (7.9) 4 NM

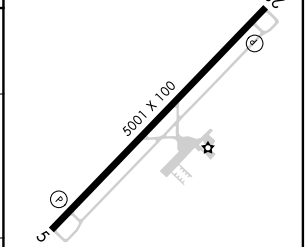
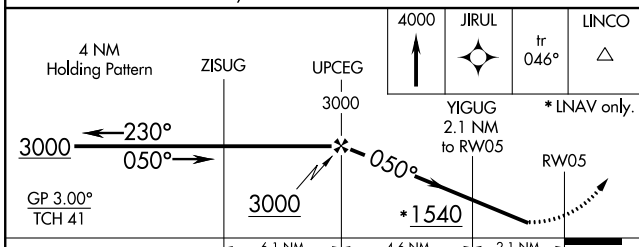
(FAF) UPCEG 3000 050° (6.1)

YIGUG 2.1 NM to RW05

JIRUL 1856 979

1239± A, 1223 A, 1203 A, 1532± A

ELEV 847	TDZE 847
----------	----------



CATEGORY	A	B	C	D
LPV DA	1097-1		250 (300-1)	
LNAV/VNAV DA	1173-1 1/8		326 (400-1 1/8)	
LNAV MDA	1240-1 393 (400-1)		1240-1 1/8 393 (400-1 1/8)	

MIRL Rwy 5-23 0

SE-2, 16 JUN 2022 to 14 JUL 2022

SE-2, 16 JUN 2022 to 14 JUL 2022