

APP CRS <b>278°</b>	Rwy Idg TDZE Apt Elev	<b>5003</b> <b>806</b> <b>806</b>
------------------------	-----------------------------	---

# RNAV (GPS) RWY 28

HUNTINGTON MUNI (HHG)

RNP APCH - GPS

**⚠** Rwy 28 helicopter visibility reduction below 3/4 SM NA.

**MISSED APPROACH:** Climb to 1700 then climbing right turn to 2600 direct IDXOH and hold.

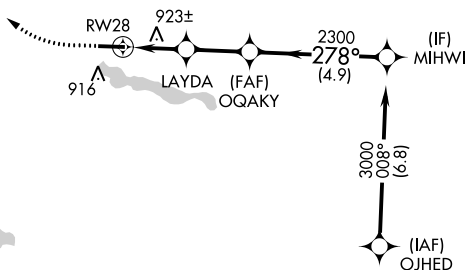
AWOS-3PT  
**126.575**

FORT WAYNE APP CON  
**127.2 284.6**

UNICOM  
**122.8 (CTAF) 0**

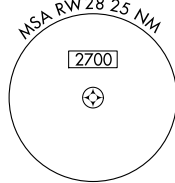


△ 1182

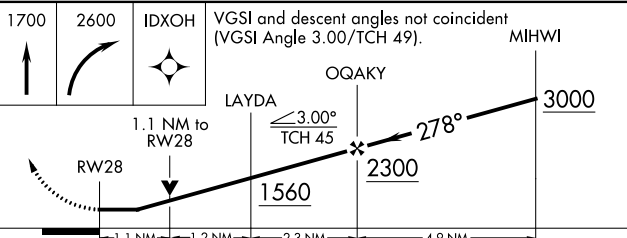
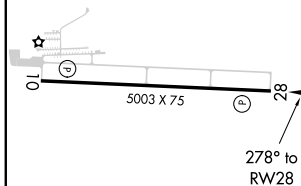


△ 1397

Procedure NA for arrivals at AJAYS on V221 southbound.



ELEV 806	TDZE 806
----------	----------



CATEGORY	A	B	C	D
LNAV MDA	1200-1	394 (400-1)	1200-1 1/8	394 (400-1 1/8)
<b>C</b> CIRCLING	1300-1	494 (500-1)	1460-1 3/4 654 (700-1 3/4)	1540-2 1/4 734 (800-2 1/4)

MIRL Rwy 10-28 **0**  
REIL Rwy 10 and 28 **0**

EC-2, 16 JUN 2022 to 14 JUL 2022

EC-2, 16 JUN 2022 to 14 JUL 2022