

WAAS CH 56525 W14A	APP CRS 136°	Rwy ldg 5310 TDZE 4168 Apt Elev 4176
--	------------------------	---

RNAV (GPS) RWY 14

MONDELL FLD (ECS)

RNP APCH.

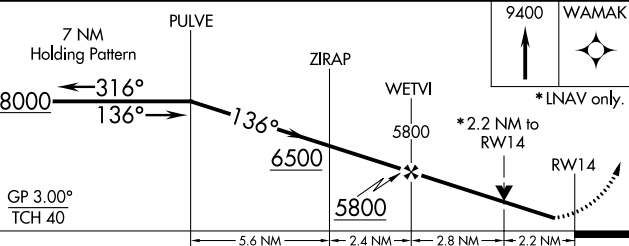
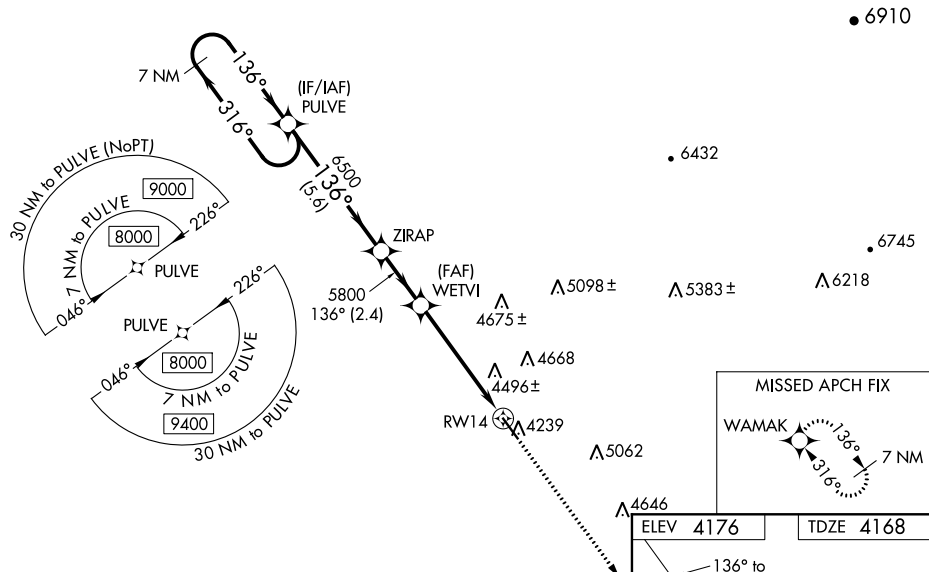
⚠ When Newcastle altimeter setting not received, procedure NA.
⚠ For uncompensated Baro-VNAV systems, LNAV/VNAV NA below -23°C (-9°F) or above 53°C (128°F). Rwy 14 helicopter visibility reduction below 3/4 SM NA. Circling NA northeast of Rwy 14-32.

MISSED APPROACH: Climb to 9400 direct WAMAK and hold, continue climb-in-hold to 9400.

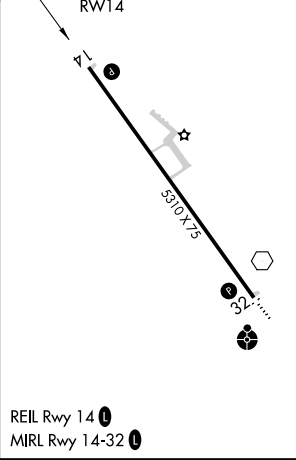
AWOS-3PT
118.0

DENVER CENTER
127.95 338.2

UNICOM
122.8 (CTAF) 0



CATEGORY	A	B	C	D
LPV DA	4418-1 250 (300-1)			
LNNAV/VNAV DA	4846-2½ 678 (700-2½)			
LNNAV MDA	4920-1 752 (800-1)	4920-1¼ 752 (800-1¼)	4920-2 752 (800-2)	
C CIRCLING	4920-1 744 (800-1)	4920-1¼ 744 (800-1¼)	4920-2¼ 744 (800-2¼)	5000-2¾ 824 (900-2¾)



NW-1, 16 JUN 2022 to 14 JUL 2022

NW-1, 16 JUN 2022 to 14 JUL 2022