

PEKIN, ILLINOIS

AL-5812 (FAA)

22139

| | | | |
|--|------------------------|-------------------------------------|--|
| VORTAC PIA 115.2 Chan 99 | APP CRS 151° | Rwy Idg TDZE Apt Elev 530 | N/A N/A 530 |
|--|------------------------|-------------------------------------|--|

VOR-A
PEKIN MUNI (C15)

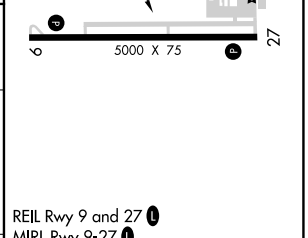
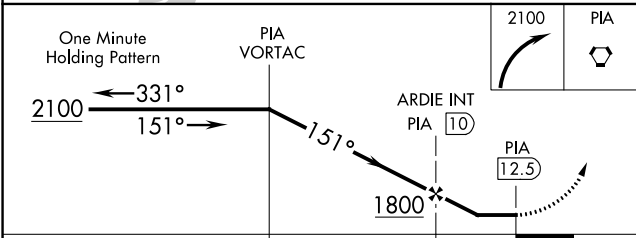
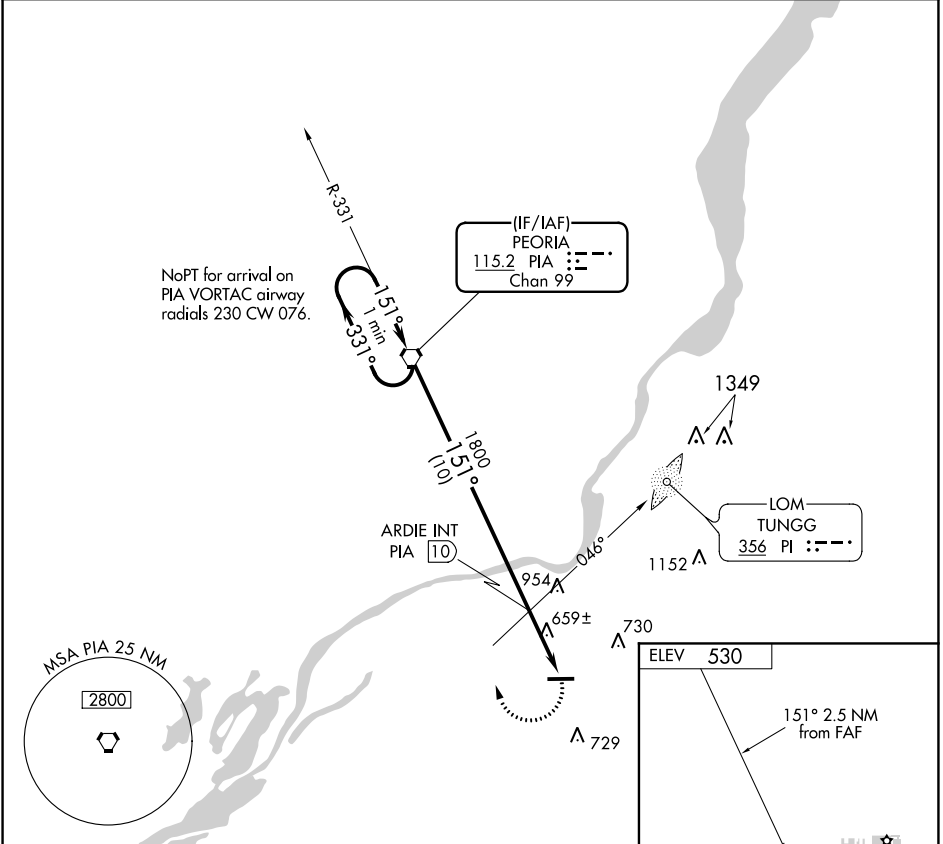
DME or ADF required.

▼ Use General Downring - Peoria Intl altimeter setting; when not received use Lincoln **▲ NA** altimeter setting and increase all MDAs 40 feet and visibility Cat C ¼ SM.

MISSED APPROACH: Climbing right turn to 2100 direct PIA VORTAC and hold.

PEORIA APP CON **124.675 269.2**

UNICOM **122.8 (CTAF) 0**



| CATEGORY | A | B | C | D | FAF to MAP 2.5 NM | | | | |
|----------|--------|-------------|------------------------|-------------------------|-------------------|------|------|------|------|
| | | | | | Knots | 60 | 90 | 120 | 150 |
| CIRCLING | 1060-1 | 530 (600-1) | 1100-1½ 570 (600-½) | 1360-2¾ 830 (900-2¾) | 2:30 | 1:40 | 1:15 | 1:00 | 0:50 |

PEKIN, ILLINOIS
Amdt 7C 19MAY22

40°29'N-89°41'W

PEKIN MUNI (C15)
VOR-A

EC-3, 16 JUN 2022 to 14 JUL 2022

EC-3, 16 JUN 2022 to 14 JUL 2022