

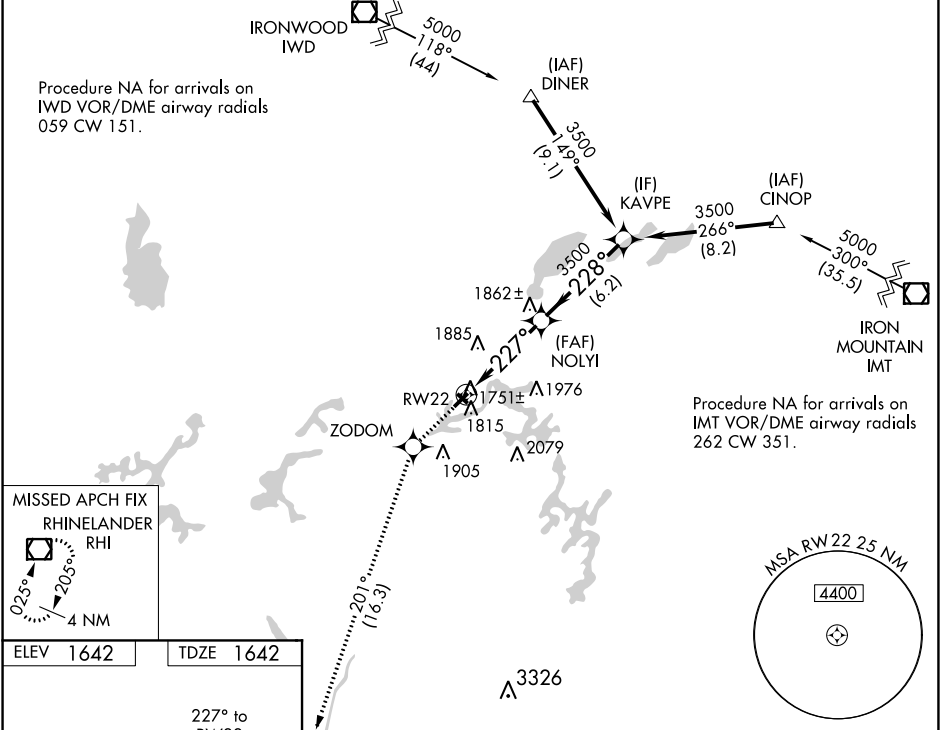
| | | |
|--|------------------------|---|
| WAAS CH 99304 W22A | APP CRS 227° | Rwy Idg TDZE 1642 Apt Elev 1642 |
|--|------------------------|---|

RNAV (GPS) RWY 22

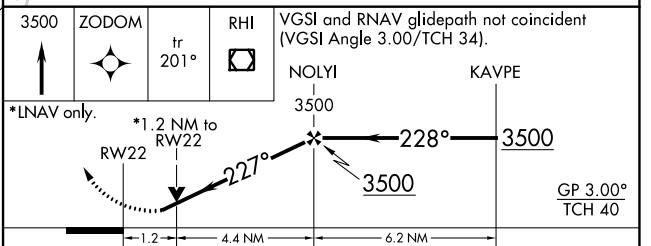
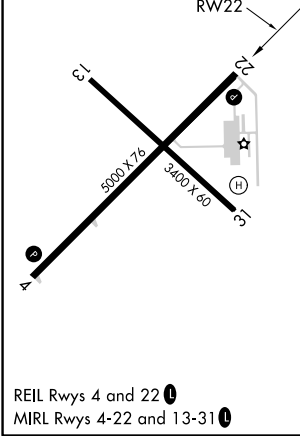
EAGLE RIVER UNION (EGV)

RNP APCH. MISSED APPROACH: Baro-VNAV and VDP NA when using Minocqua-Woodruff altimeter setting. For uncompensated Baro-VNAV systems, LNAV/VNAV NA below -18°C or above 45°C. When local altimeter setting not received, use Minocqua-Woodruff altimeter setting and increase LPV DA to 2059, LNAV/VNAV DA to 2085, and all MDAs 60 feet. Increase Circling Cat C/D visibility ¼ SM. Rwy 22 helicopter visibility reduction below ¼ SM NA. Climb to 3500 direct ZODOM and via track 201° to RHI VOR/DME and hold.

| | | |
|--------------------------|---|-------------------------------|
| AWOS-3 118.325 | MINNEAPOLIS CENTER 133.65 281.5 | UNICOM 122.8 (CTAF) |
|--------------------------|---|-------------------------------|



| | |
|-----------|-----------|
| ELEV 1642 | TDZE 1642 |
|-----------|-----------|



| CATEGORY | A | B | C | D |
|--------------|--------|-------------|-------------------------|-------------------------|
| LPV DA | | 2012-1¼ | 370 (400-1¼) | |
| LNAV/VNAV DA | | 2038-1½ | 396 (400-1½) | |
| LNAV MDA | 2040-1 | 398 (400-1) | 2040-1⅛ 398 (400-1⅛) | 2040-1¼ 398 (400-1¼) |
| CIRCLING | 2120-1 | 478 (500-1) | 2260-1¾ 618 (700-1¾) | 2340-2¼ 698 (700-2¼) |

EC-3, 16 JUN 2022 to 14 JUL 2022

EC-3, 16 JUN 2022 to 14 JUL 2022