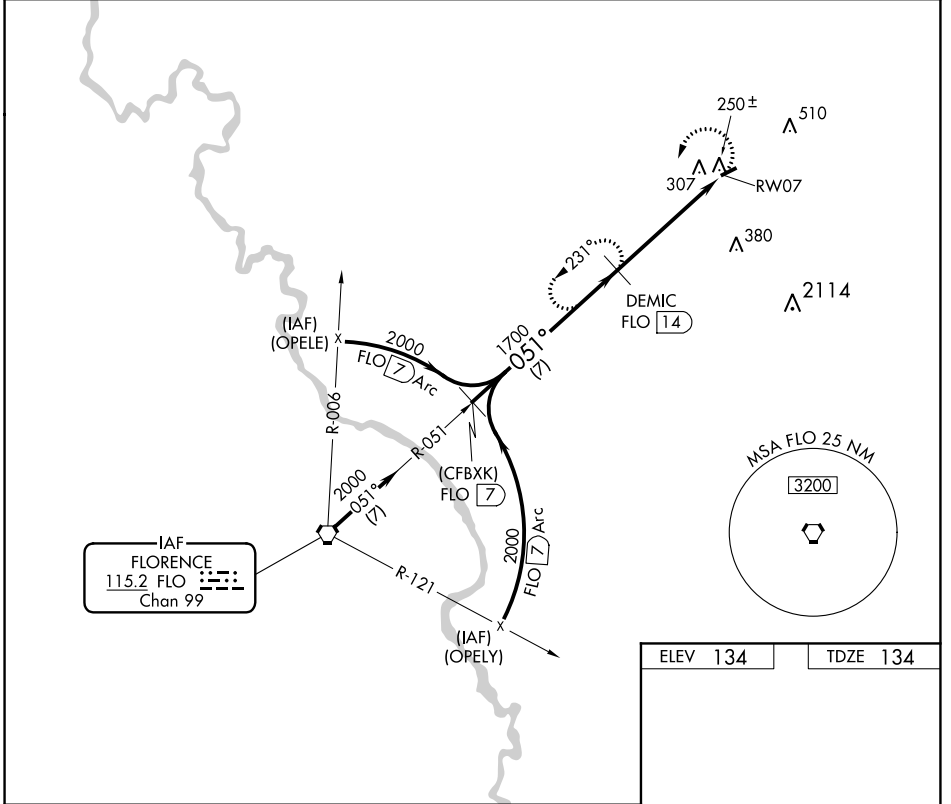


VORTAC FLO 115.2 Chan 99	APP CRS 051°	Rwy Idg 3000 TDZE 134 Apt Elev 134
--	------------------------	---

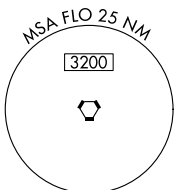
VOR/DME or GPS RWY 7

DILLON COUNTY (D.L.C)

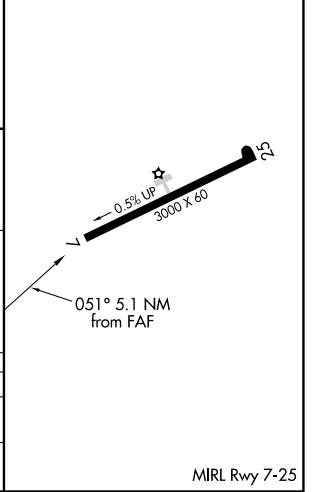
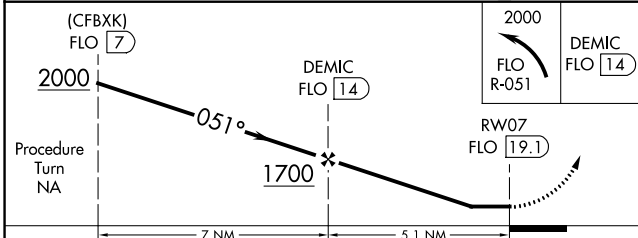
<p>▼ ▲NA</p> <p>Use Florence altimeter setting.</p>	<p>MISSED APPROACH: Climbing left turn to 2000 via FLO R-051 to DEMIC 14 DME and hold.</p>
<p>FLORENCE APP CON ★ 118.6 341.7</p>	<p>CTAF 122.9</p>



IAF
FLORENCE
115.2 FLO
Chan 99



ELEV 134	TDZE 134
----------	----------



CATEGORY	A	B	C	D
S-7	660-1	526 (600-1)	660-1½ 526 (600-1½)	NA
CIRCLING	700-1	566 (600-1)	700-1½ 566 (600-1½)	NA

MIRL Rwy 7-25

SE-2, 16 JUN 2022 to 14 JUL 2022

SE-2, 16 JUN 2022 to 14 JUL 2022