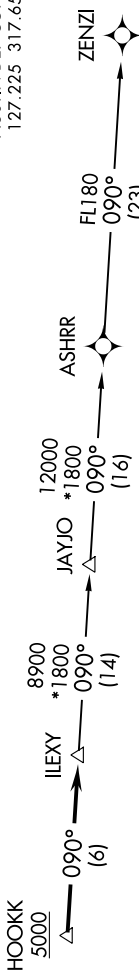
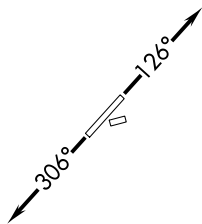


ILEXY THREE DEPARTURE (RNAV)

SC-3, 16 JUN 2022 to 14 JUL 2022

TOP ALTITUDE: ASSIGNED BY ATC

AWOS-3
118.825
CLINC DEL (when hvr closed)
126.025
EXECUTIVE TOWER ★
120.3 (CTAF)
UNICOM
122.975
AUSTIN DEP CON
127.225 317.65



NOTE: RADAR required.
NOTE: DME/DME/IRU or GPS required.
NOTE: RNAV 1.
NOTE: Houston terminal area arrivals expect routing from ILEXY.
NOTE: JAYJO transition to join V306 only.

TAKEOFF MINIMUMS:
Rwys 16, 34: NA-Environmental.
Rwys 13, 31: Standard.

NOTE: Chart not to scale.

DEPARTURE ROUTE DESCRIPTION

TAKEOFF RUNWAY 13: Climb on heading 126° or as assigned by ATC for vectors to cross HOOKK at or above 5000, thence. . . .
TAKEOFF RUNWAY 31: Climb on heading 306° or as assigned by ATC for vectors to cross HOOKK at or above 5000, thence. . . .

. . . on track 090° to ILEXY, then on transition. Maintain altitude assigned by ATC. Expect filed altitude 10 minutes after departure.

JAYJO TRANSITION (ILEXY3.JAYJO)
ZENZI TRANSITION (ILEXY3.ZENZI)

SC-3, 16 JUN 2022 to 14 JUL 2022