

APP CRS	Rwy Idg	<b>5495</b>
<b>181°</b>	TDZE	<b>436</b>
	Apt Elev	<b>436</b>

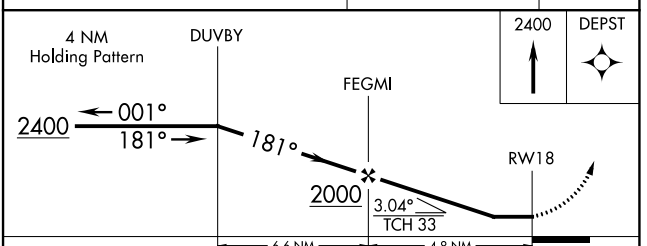
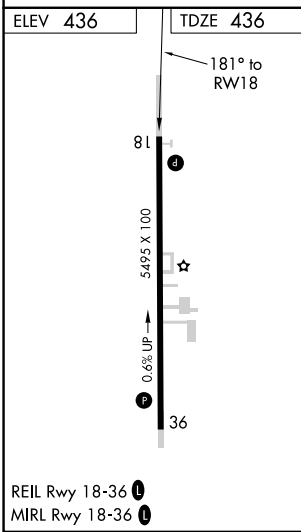
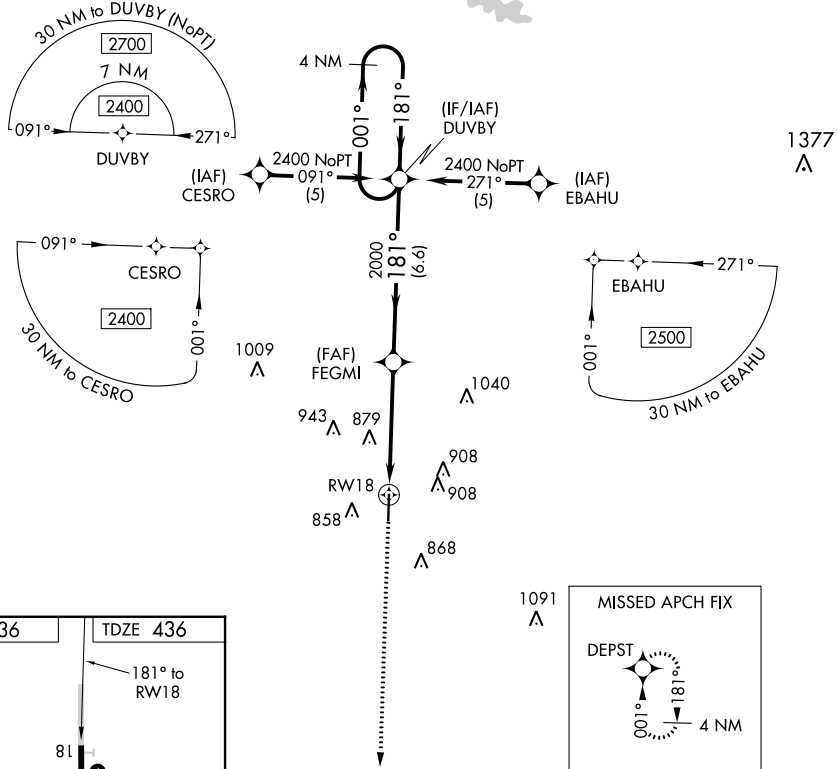
# RNAV (GPS) RWY 18

MARION COUNTY-RANKIN FITE (HAB)

**NA** DME/DME RNP-0.3 NA. Helicopter visibility reduction below 1 SM NA. Obtain local altimeter setting on CTAF. When not received, use Tupelo altimeter setting and increase all MDA 120 feet, increase LNAV MDA visibility Cat B ¼ mile, Cat C, D ½ mile and Circling visibility Cats A, D ¼ mile, Cat C ½ mile. Rwy 18 Straight-in and Circling minimums NA at night.

**MISSED APPROACH:** Climb to 2400 direct DEPST and hold.

MEMPHIS CENTER **127.1 269.4** UNICOM **122.8 (CTAF)**



CATEGORY	A	B	C	D
LNAV MDA	1140-1	704 (800-1)	1140-2 704 (800-2)	1140-2½ 704 (800-2½)
CIRCLING	1220-1 784 (800-1)	1220-1¼ 784 (800-1¼)	1220-2¼ 784 (800-2¼)	1260-2¾ 824 (900-2¾)

SE-4, 16 JUN 2022 to 14 JUL 2022

SE-4, 16 JUN 2022 to 14 JUL 2022