

WAAS CH 42712 W36A	APP CRS 001°	Rwy Idg 5495 TDZE 418 Apt Elev 436
--	------------------------	---

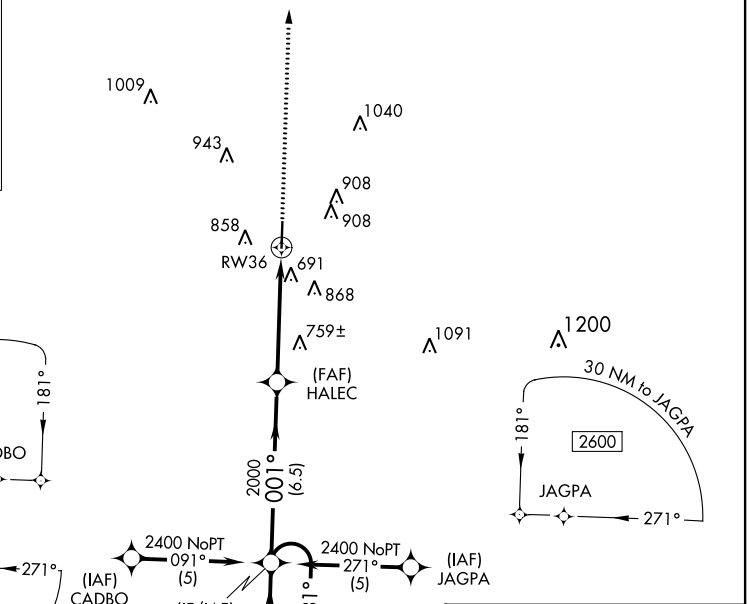
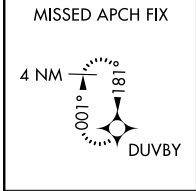
RNAV (GPS) RWY 36

MARION COUNTY-RANKIN FITE (HAB)

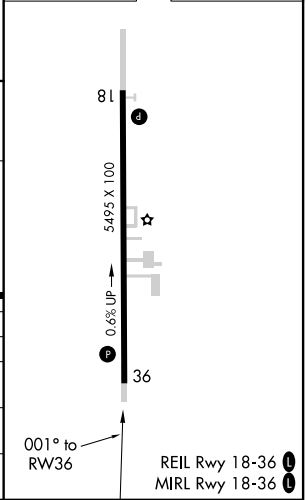
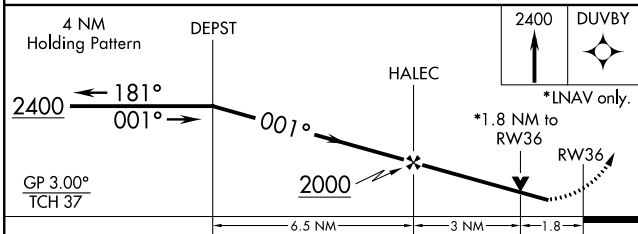
⚠ For uncompensated Baro-VNAV systems, LNAV/VNAV NA below -15°C (5°F) or above 48°C (118°F). DME/DME RNP-0.3 NA. Helicopter visibility reduction below 3/4 SM NA. Obtain local altimeter setting on CTAF; when not received, use Tupelo altimeter setting and increase DA 104 feet and all MDA 120 feet, increase visibility LPV all Cats and LNAV Cats C, D 1/4 mile, Circling Cats A, D 1/4 mile, and Cat C 1/2 mile. VDP NA when using Tupelo altimeter setting. Baro-VNAV NA when using Tupelo altimeter setting. Circling to Rwy 18 NA at night.

MISSED APPROACH:
Climb to 2400 direct DUVBY and hold.

MEMPHIS CENTER 127.1 269.4	UNICOM 122.8 (CTAF) 0
--------------------------------------	---------------------------------



ELEV 436	TDZE 418
----------	----------



CATEGORY	A	B	C	D
LPV DA	723-1 3/4 305 (300-1 1/4)			
LNAV/VNAV DA	1219-3 801 (800-3)			
LNAV MDA	1020-1	602 (600-1)	1020-1 1/4 602 (600-1 3/4)	1020-2 602 (600-2)
CIRCLING	1220-1 784 (800-1)	1220-1 1/4 784 (800-1 1/4)	1220-2 1/4 784 (800-2 1/4)	1260-2 3/4 824 (900-2 3/4)

REIL Rwy 18-36 0
MIRL Rwy 18-36 0

SE-4, 16 JUN 2022 to 14 JUL 2022

SE-4, 16 JUN 2022 to 14 JUL 2022