

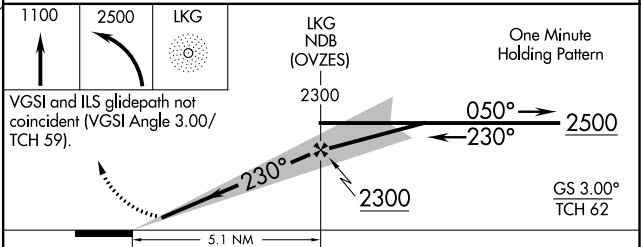
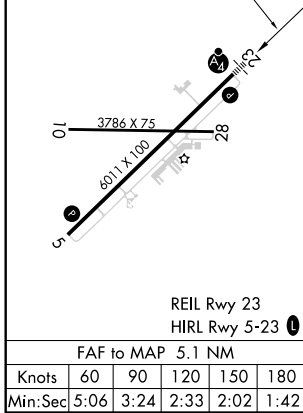
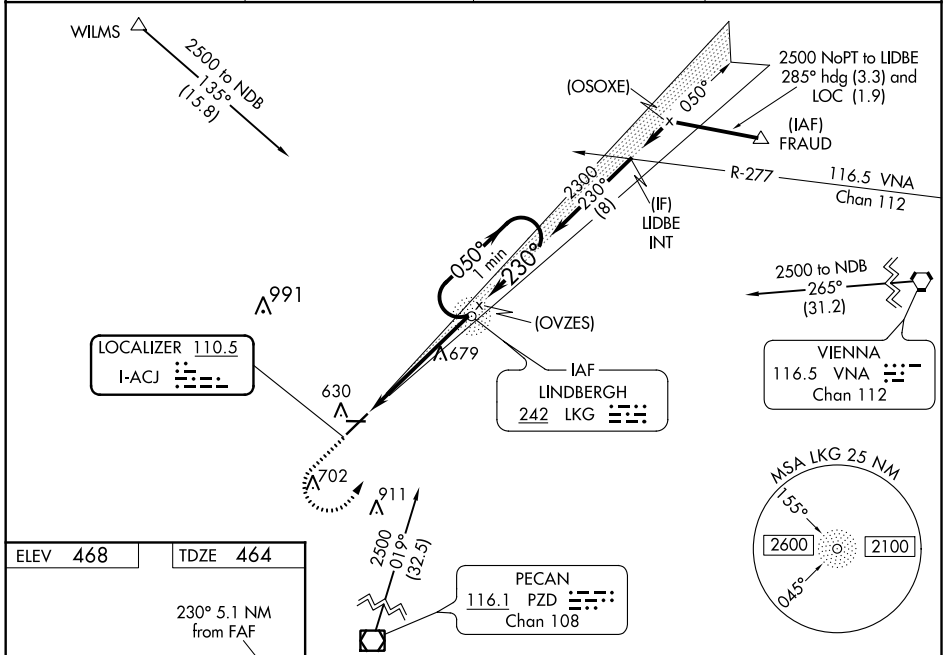
LOC I-ACJ	APP CRS	Rwy Idg	6011
110.5	230°	TDZE	464
		Apt Elev	468

ILS or LOC RWY 23

JIMMY CARTER RGNL (ACJ)

ADF required.			
<p>▽ NA Rwy 23 helicopter visibility reduction below 3/4 SM NA. When local altimeter setting not received, use Columbus altimeter setting and increase all DA 114 feet and all MDAs 120 feet; increase S-ILS 23 all Cats and S-LOC 23 Cats C/D visibility 3/8 SM and increase Circling Cat C visibility 1/2 SM and Cat D visibility 1/4 SM. For inop MALSF, when using Columbus altimeter setting, increase ILS all Cats visibility to 1 3/8 mile, increase LOC Cat D visibility to 1 3/8 mile, and increase Circling Cat D visibility to 2 1/4 mile. Circling Rwy 10, 28 NA at night.</p>	<p>MALSF</p>	<p>MISSED APPROACH: Climb to 1100 then climbing left turn to 2500 direct LKG NDB and hold.</p>	

AWOS-3 128.375	ATLANTA APP CON ★ 124.2 323.1	CLNC DEL 119.95	UNICOM 122.8 (CTAF) 0
--------------------------	---	---------------------------	---------------------------------



CATEGORY	A	B	C	D
S-ILS 23	775-3/4		311 (400-3/4)	
S-LOC 23	940-3/4 476 (500-3/4)		940-1/8 476 (500-1/8)	
CIRCLING	940-1 472 (500-1)		1020-1 1/2 552 (600-1 1/2) 1280-2 3/4 812 (900-2 3/4)	

SE-4, 16 JUN 2022 to 14 JUL 2022

SE-4, 16 JUN 2022 to 14 JUL 2022