

WAAS CH 70724 W23A	APP CRS 230°	Rwy Idg TDZE 464 Apt Elev 468	6011 464 468
--	------------------------	---	---

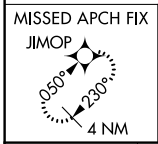
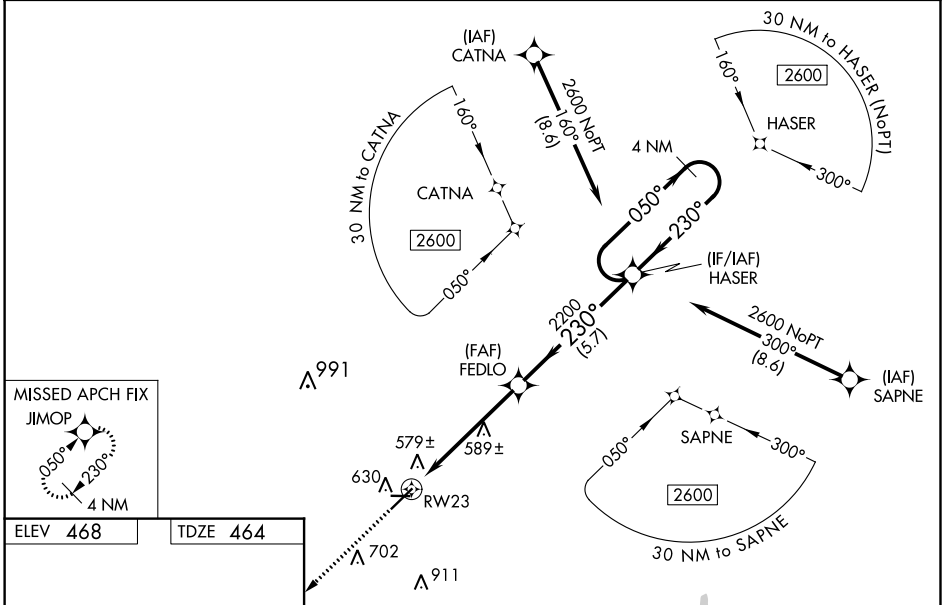
RNAV (GPS) RWY 23
JIMMY CARTER RGNL (ACJ)

RNP APCH.

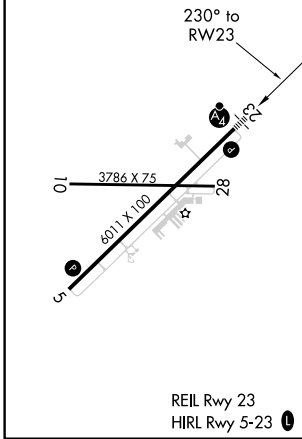
Baro-VNAV NA and VDP NA when using Columbus altimeter setting. For uncompensated Baro-VNAV systems, LNAV/VNAV NA below -15°C or above 41°C. For inop ALS when using Columbus altimeter setting, increase LPV and LNAV/VNAV all Cats visibility to 1 3/8 SM, LNAV Cats C and D visibility to 1 3/8 SM, and Circling Cat D visibility to 2 1/4 SM. Rwy 23 helicopter visibility reduction below 3/4 SM NA. When local altimeter setting not received, use Columbus altimeter setting and increase LPV DA to 874, LNAV/VNAV DA to 879 feet and all visibilities 3/8 SM, increase all MDAs 120 feet and LNAV Cats C/D visibility 3/8 SM and Circling Cat C visibility 1/2 SM, Cat D 1/4 SM. For inop ALS, increase LPV all Cats, LNAV/VNAV Cat D, and LNAV Cat D visibility to 1 SM. Circling Rwy 10, 28 NA at night.

MALSF MISSED APPROACH: Climb to 2600 direct JIMOP and hold.

AWOS-3 128.375	ATLANTA APP CON * 124.2 323.1	CLNC DEL 119.95	UNICOM 122.8 (CTAF)
--------------------------	---	---------------------------	-------------------------------



ELEV 468	TDZE 464
-----------------	-----------------



2600 JIMOP VGSI and RNAV glidepath not coincident (VGSI Angle 3.00°/TCH 59).

*LNAV only.

FEDLO 2200
RW23 468
HASER 2600
4 NM Holding Pattern

GP 3.00° TCH 45

Distances: 1 NM, 4.3 NM, 5.7 NM

CATEGORY	A	B	C	D
LPV DA		760-3/4	296 (300-3/4)	
LNAV/VNAV DA		765-3/4	301 (300-3/4)	
LNAV MDA	840-3/4	376 (400-3/4)	840-3/4	376 (400-3/4)
CIRCLING	940-1	472 (500-1)	1020-1 1/2 552 (600-1 1/2)	1280-2 3/4 812 (900-2 3/4)

SE-4, 16 JUN 2022 to 14 JUL 2022

SE-4, 16 JUN 2022 to 14 JUL 2022