

VOR/DME JVL <b>114.3</b> Chan <b>90</b>	APP CRS <b>276°</b>	Rwy Idg TDZE Apt Elev	<b>5000</b> <b>1070</b> <b>1086</b>
---	------------------------	-----------------------------	---

# VOR/DME RWY 30

MONROE MUNI (EFT)

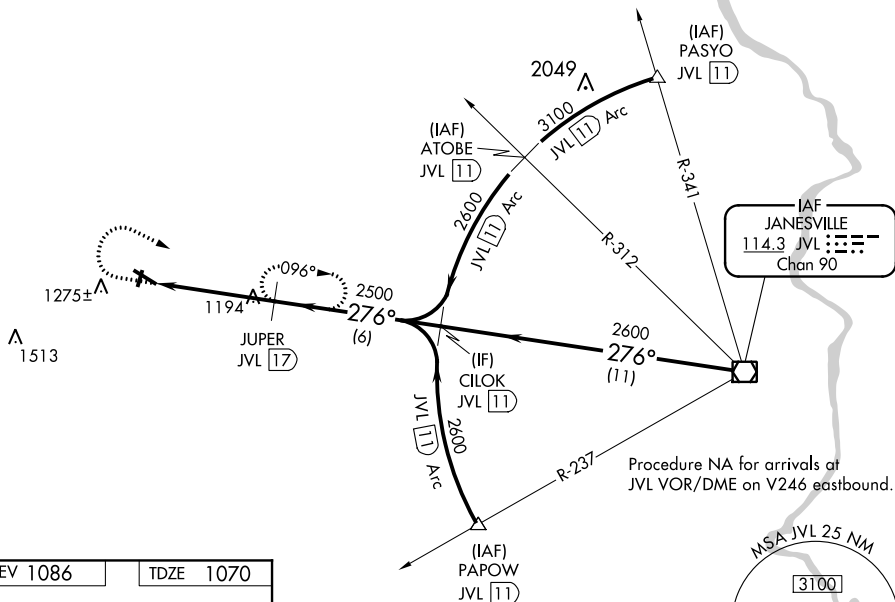
**⚠** When local altimeter setting not received, use Altimeter setting and increase all MDA 100 feet, increase Circling Cat C visibility ¼ mile.  
**⚠** Rwy 30 helicopter visibility reduction below ¾ SM NA. Circling to Rwy 2-20 NA at night.

**MISSED APPROACH:** Climb to 1800 then climbing right turn to 2600 on JVL VOR/DME R-276 to JUPER/JVL 17 DME and hold.

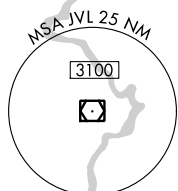
AWOS-3  
**118.375**

ROCKFORD APP CON  
**126.0 327.0**

UNICOM  
**123.05 (CTAF) 0**



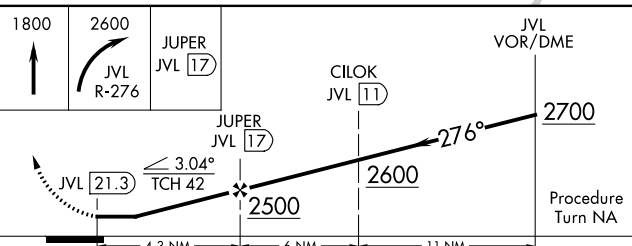
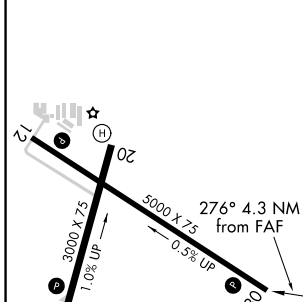
Procedure NA for arrivals at JVL VOR/DME on V246 eastbound.



EC-3, 16 JUN 2022 to 14 JUL 2022

EC-3, 16 JUN 2022 to 14 JUL 2022

ELEV 1086	TDZE 1070
-----------	-----------



CATEGORY	A	B	C	D
S-30	1460-1 390 (400-1)	1460-1¼ 390 (400-1¼)	1460-1½ 390 (400-1½)	1460-1¾ 390 (400-1¾)
CIRCLING	1540-1 454 (500-1)	1640-1 554 (600-1)	1640-1½ 554 (600-1½)	1640-2 554 (600-2)