

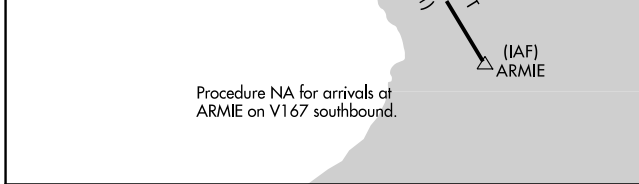
APP CRS	Rwy Idg	3000
058°	TDZE	157
	Apt Elev	157

RNAV (GPS) RWY 6

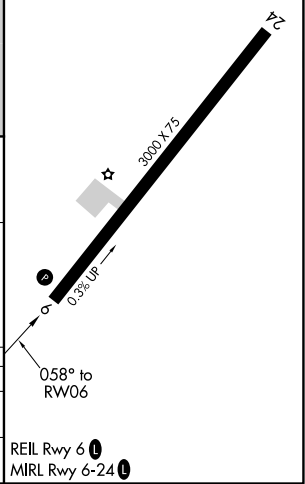
BIDDEFORD MUNI (B19)

RNP APCH.		MISSED APPROACH: Climbing left turn to 3000 direct ENE VOR/DME and hold, continue climb-in-hold to 3000.
⚠ NA Rwy 6 helicopter visibility reduction below 3/4 SM NA. Obtain local altimeter setting on CTAF; when not received use Sanford altimeter setting and increase all MDA 40 feet and LNAV visibility Cat C 1/8 SM, and Circling visibility Cat C 1/4 SM. VDP NA when using Sanford altimeter setting. Circling Rwy 24 NA at night.		

PORTLAND APP CON * 119.75 269.35	UNICOM 123.0 (CTAF) 1
--	---------------------------------



ELEV 157	TDZE 157
----------	----------



4 NM Holding Pattern	DEXXY	VGSIs and descent angles not coincident (VGSi Angle 3.50/TCH 31).		3000	ENE
6000	238°	SWLCH	1300	1.4 NM to RWY 06	
2300	058°			3.03° TCH 31	
				2.1 NM	1.4 NM

CATEGORY	A	B	C	D
LNAV MDA	680-1	523 (600-1)	680-1½ 523 (600-1½)	NA
CIRCLING	780-1	623 (700-1)	800-1¾ 643 (700-1¾)	NA

NE-1, 16 JUN 2022 to 14 JUL 2022

NE-1, 16 JUN 2022 to 14 JUL 2022