

VORTAC ENE 117.1 Chan 118	APP CRS 088°	Rwy Idg TDZE Apt Elev	3000 157 157
---	------------------------	-----------------------------	---

VOR RWY 6

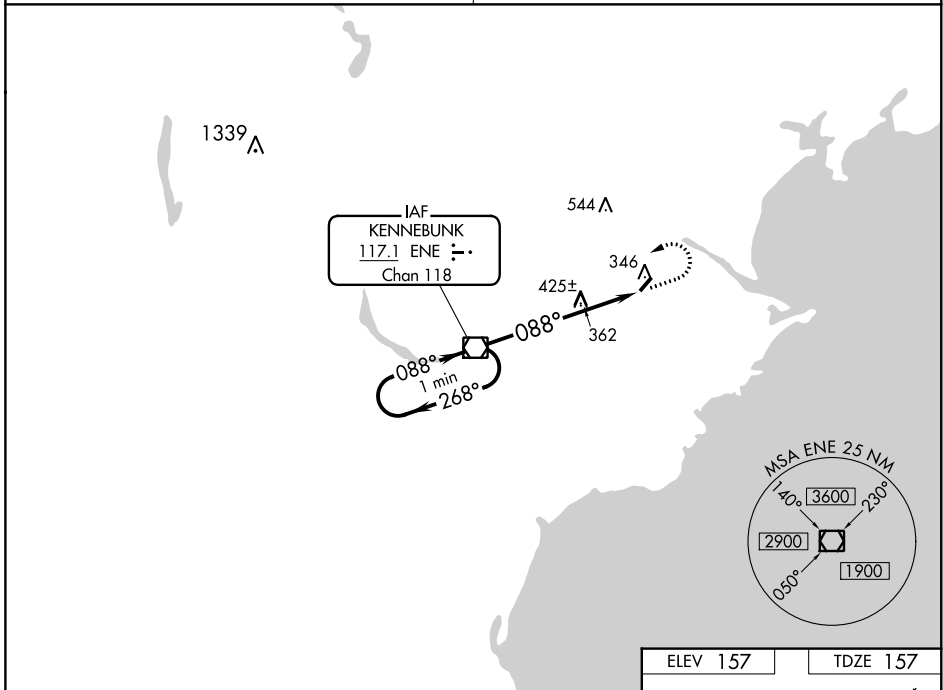
BIDDEFORD MUNI (B19)

NA Obtain local altimeter on CTAF; when not received, use Sanford altimeter setting.
VDP NA when using Sanford altimeter setting. Circling Rwy 24 NA at night.
Rwy 6 helicopter visibility reduction below 3/4 SM NA.

MISSED APPROACH: Climb to 800, then climbing left turn to 2300 direct ENE VOR/DME and hold.

PORTLAND APP CON *
119.75 269.35

UNICOM
123.0 (CTAF)



One Minute Holding Pattern		ENE VORTAC		800	2300	ENE
2300 ← 268°		088° →				
VGSi and descent angles not coincident (VGSi Angle 3.50/TCH 31).		088°		ENE 5	ENE 6.4	
		3.14° TCH 31				
		5 NM		1.4 NM		
CATEGORY	A	B	C	D		
S-6	700-1	543 (600-1)	700-1 5/8 543 (600-1 5/8)	NA		
CIRCLING	700-1 543 (600-1)	720-1 563 (600-1)	800-1 3/4 643 (700-1 3/4)	NA		
SANFORD ALTIMETER SETTING MINIMUMS						
S-6	740-1	583 (600-1)	740-1 3/4 583 (600-1 3/4)	NA		
CIRCLING	740-1 583 (600-1)	760-1 603 (700-1)	840-2 683 (700-2)	NA		

ELEV 157	TDZE 157
REIL Rwy 6 MIRL Rwy 6-24	
FAF to MAP 6.4 NM	
Knots	60 90 120 150 180
Min:Sec	6:24 4:16 3:12 2:34 2:08

NE-1, 16 JUN 2022 to 14 JUL 2022

NE-1, 16 JUN 2022 to 14 JUL 2022