

WAAS CH <b>45818</b> <b>W18A</b>	APP CRS <b>180°</b>	Rwy ldg TDZE Apt Elev	<b>5001</b> <b>44</b> <b>47</b>
--	------------------------	-----------------------------	---------------------------------------

# RNAV (GPS) RWY 18

HAMMOND NORTHSHORE RGNL (HDC)

**⚠** Baro-VNAV NA when using Louis Armstrong New Orleans Intl altimeter setting.  
**⚠** For uncompensated Baro-VNAV systems, LNAV/VNAV NA below -15°C (5°F) or above 49°C (120°F). DME/DME RNP-0.3 NA. When local altimeter setting not received, use Louis Armstrong New Orleans Intl altimeter setting and increase all DA 89 feet and all MDA 100 feet, increase LNAV/VNAV all Cats, LNAV and Circling Cat D visibility ¼ SM, and Circling Cat C visibility ½ SM. For inoperative MALSR increase LNAV Cat D visibility to 1¼ mile. For inoperative MALSR when using Louis Armstrong New Orleans Intl altimeter setting increase LPV all Cats visibility to 1 mile. VDP NA with Louis Armstrong New Orleans Intl altimeter setting.

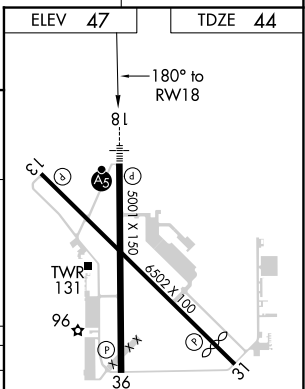
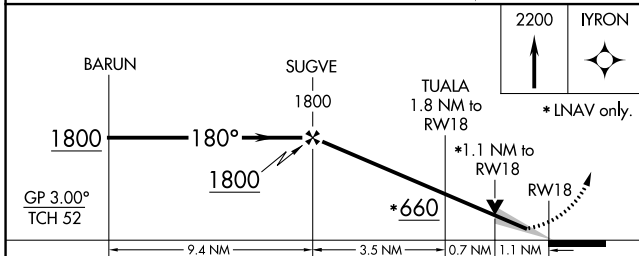
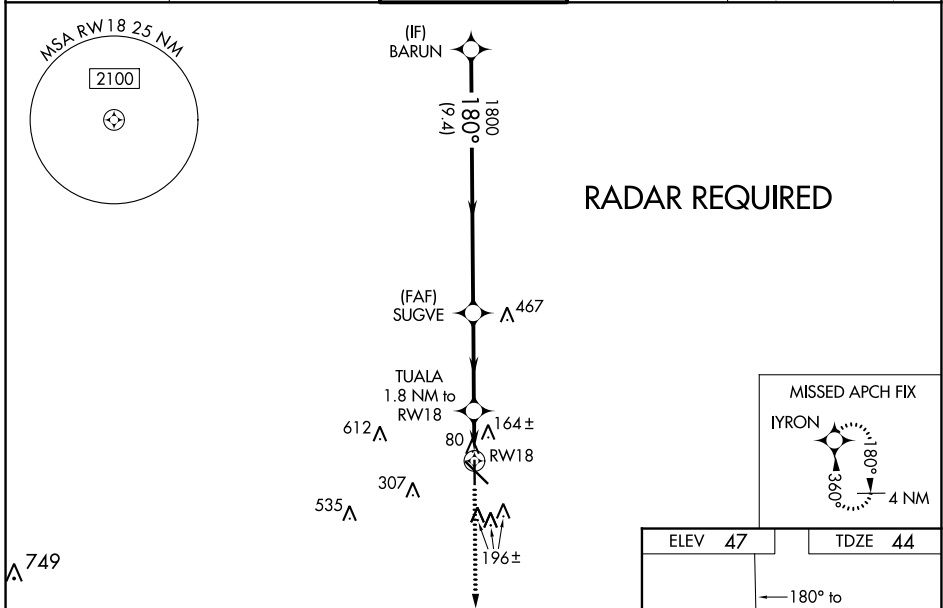
MALSR



MISSED APPROACH:  
Climb to 2200 direct IYRON and hold.

ATIS <b>118.325</b>	NEW ORLEANS APP CON <b>119.3 350.35</b>	HAMMOND TOWER ★ <b>120.575</b> (CTAF) <b>0</b>	GND CON <b>119.85</b>	CLNC DEL <b>119.3</b> (When twr closed)
------------------------	--	---	--------------------------	---

**RADAR REQUIRED**



GP 3.00° TCH 52	2200 IYRON			
	* LNAV only.			
CATEGORY	A	B	C	D
LPV DA	244-½		200 (200-½)	
LNAV/VNAV DA	466-1		422 (500-1)	
LNAV MDA	460-½	416 (500-½)	460-¾ 416 (500-¾)	460-1 416 (500-1)
CIRCLING	500-1	453 (500-1)	620-1½ 573 (600-1½)	920-2¾ 873 (900-2¾)

REIL Rwy 13, 31 and 36 **0**  
 MIRL Rwy 13-31 and 18-36 **0**

SC-4, 16 JUN 2022 to 14 JUL 2022

SC-4, 16 JUN 2022 to 14 JUL 2022