

WAAS CH 42718 W36A	APP CRS 360°	Rwy ldg TDZE Apt Elev	5001 43 47
--	------------------------	-----------------------------	---------------------------------------

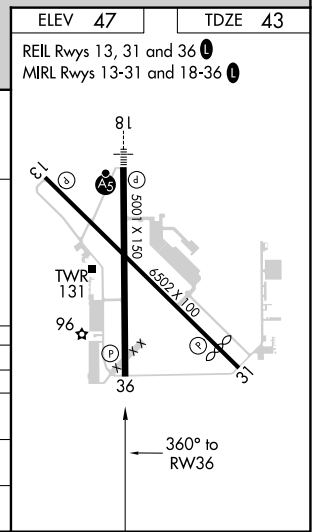
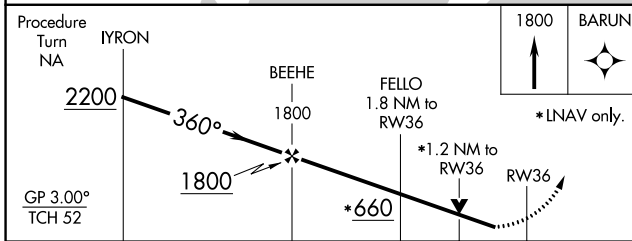
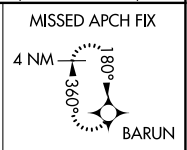
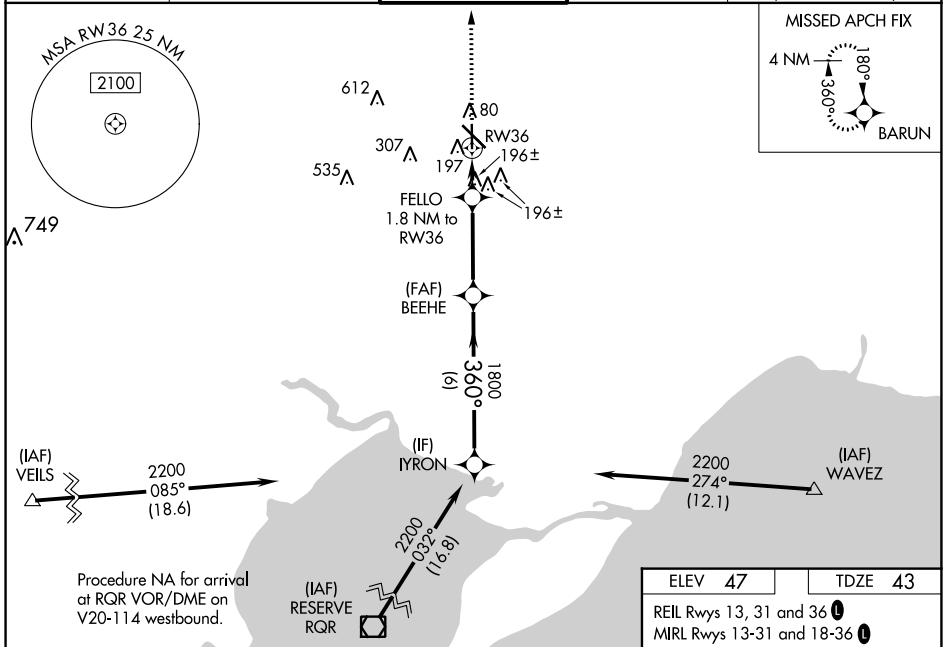
RNAV (GPS) RWY 36

HAMMOND NORTHSORE RGNL (HDC)

▼ Baro-VNAV NA when using Louis Armstrong New Orleans Intl altimeter setting.
▲ For uncompensated Baro-VNAV systems, LNAV/VNAV NA below -15°C (5°F) or above 49°C (120°F). DME/DME RNP-0.3 NA. Visibility reduction by helicopters NA. When local altimeter setting not received, use Louis Armstrong New Orleans Intl altimeter setting and increase all DA 89 feet and all MDA 100 feet, increase LPV all Cats visibility ½ SM, LNAV/VNAV all Cats, LNAV Cat C and Circling Cat D visibility ¼ SM, and Circling Cat C ½ SM. VDP NA with Louis Armstrong New Orleans Intl altimeter setting.

MISSED APPROACH: Climb to 1800 direct BARUN and hold.

ATIS 118.325	NEW ORLEANS APP CON 119.3 350.35	HAMMOND TOWER ★ 120.575 (CTAF) 0	GND CON 119.85	CLNC DEL 119.3 (When twr closed)
------------------------	--	---	--------------------------	---



GP 3.00° TCH 52	6 NM	3.5 NM	0.6 NM	1.2 NM
CATEGORY	A	B	C	D
LPV DA	293-¾		250 (300-¾)	
LNAV/VNAV DA	447-1½		404 (400-1½)	
LNAV MDA	460-1	417 (500-1)	460-1¼	417 (500-1¼)
CIRCLING	500-1	453 (500-1)	620-1½ 573 (600-1½)	920-2¾ 873 (900-2¾)

SC-4, 16 JUN 2022 to 14 JUL 2022

SC-4, 16 JUN 2022 to 14 JUL 2022