


LOC/DME I-CFU <b>108.3</b> Chan 20	APP CRS <b>331°</b>	Rwy ldg 5500 TDZE 217 Apt Elev 236
--	------------------------	---

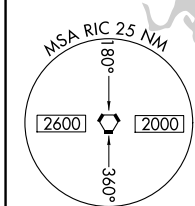
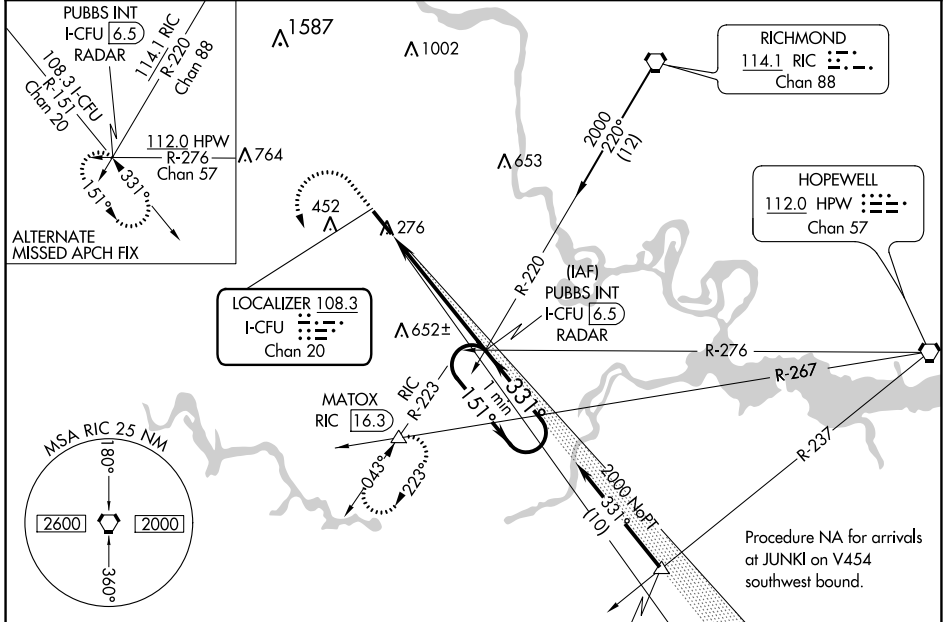
# ILS or LOC RWY 33

RICHMOND EXEC/CHESTERFIELD COUNTY (F'CI)

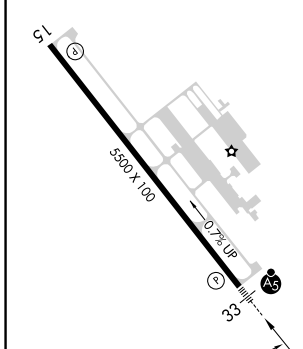
**⚠** When local altimeter setting not received, use Richmond Intl altimeter setting; increase DA to 453 feet; increase all MDAs 40 feet and S-LOC 33 visibility Cat C/D 1/8 SM and Circling visibility Cat D 1/4 SM. VDP NA with Richmond Intl altimeter setting.

**MALSR**  MISSED APPROACH: Climb to 800, then climbing left turn to 2000 via heading 148° and RIC VORTAC R-223 to MATOX INT/RIC 16.3 DME and hold.

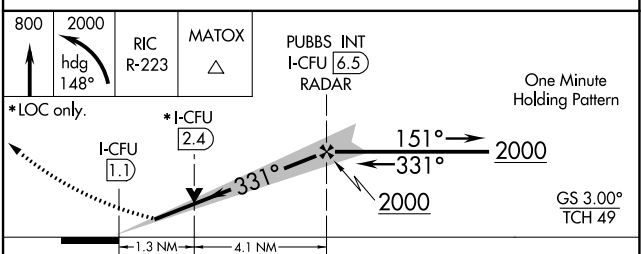
AWOS-3PT <b>128.625</b>	POTOMAC APP CON <b>126.75 307.2</b>	CLNC DEL <b>124.6</b>	UNICOM <b>123.05 (CTAF)</b> 
----------------------------	--	--------------------------	--



ELEV 236	TDZE 217
----------	----------



Knots	60	90	120	150	180
Min:Sec	5:24	3:36	2:42	2:10	1:48



CATEGORY	A	B	C	D
S-ILS 33		417-1/2	200 (200-1/2)	
S-LOC 33	660-1/2	443 (500-1/2)	660-7/8	443 (500-7/8)
CIRCLING	720-1 484 (500-1)	760-1 524 (600-1)	760-1 1/2 524 (600-1 1/2)	1020-2 1/2 784 (800-2 1/2)

# ILS or LOC RWY 33

NE-3, 16 JUN 2022 to 14 JUL 2022

NE-3, 16 JUN 2022 to 14 JUL 2022