

VORTAC MQP 117.7 Chan 124	APP CRS 142°	Rwy Idg 3603 TDZE 778 Apt Elev 778
---	------------------------	---

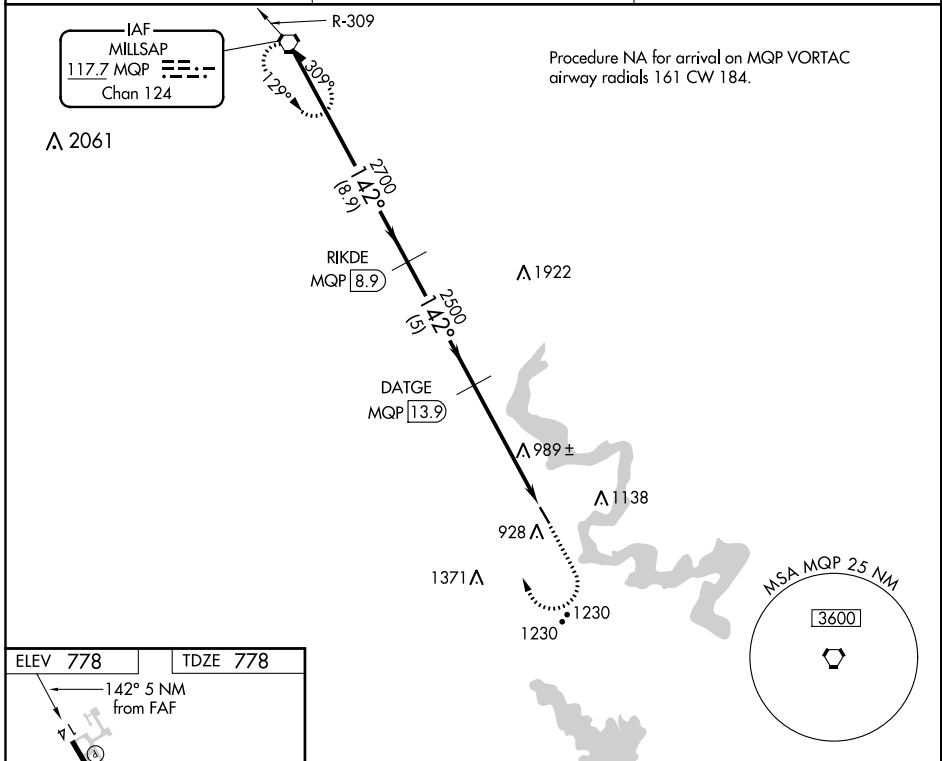
VOR/DME RWY 14

GRANBURY RGNL (G.DJ)

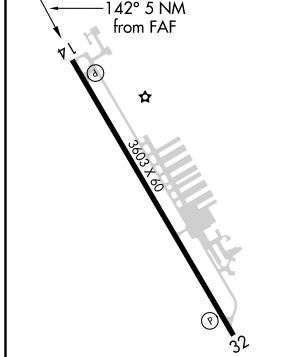
▽ Use Fort Worth Meacham Intl altimeter setting. Night Landing:
▲ NA Rwy 14 NA. Helicopter visibility reduction below 1 SM NA.

MISSED APPROACH: Climb to 2000, then climbing right turn to 3000 direct MQP VORTAC and hold.

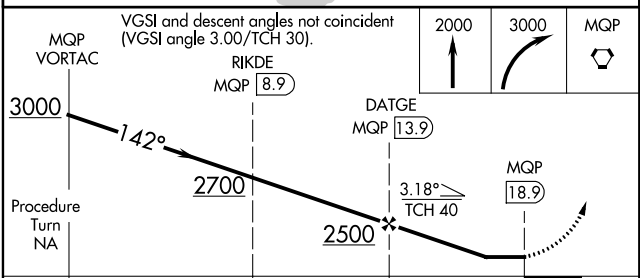
AWOS-3PT 118.925	FORT WORTH CENTER 127.15 314.05	UNICOM 123.0 (CTAF) 0
----------------------------	---	--



ELEV 778	TDZE 778
-----------------	-----------------



MIRL Rwy 14-32 0



CATEGORY	A	B	C	D
S-14	1400-1	622 (700-1)	1400-1 ³ / ₄ 622 (700-1 ³ / ₄)	NA
C CIRCLING	1420-1 642 (700-1)	1440-1 662 (700-1)	1440-1 ³ / ₄ 662 (700-1 ³ / ₄)	NA

SC-2, 16 JUN 2022 to 14 JUL 2022

SC-2, 16 JUN 2022 to 14 JUL 2022