

WAAS CH 82404 W28A	APP CRS 281°	Rwy Idg TDZE Apt Elev	4001 928 928
--	------------------------	-----------------------------	---

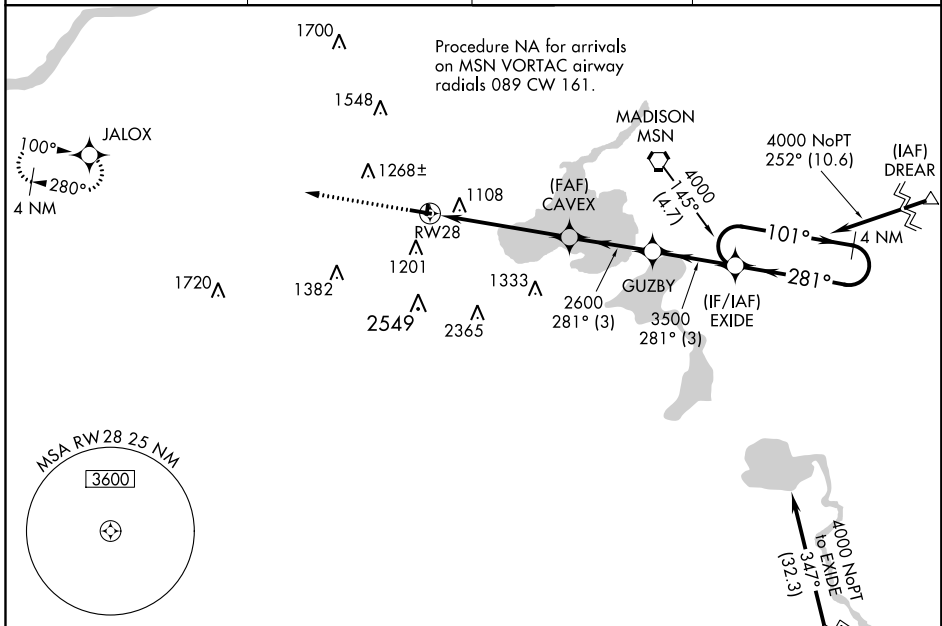
RNAV (GPS) RWY 28

MIDDLETON MUNI/MOREY FLD (C29)

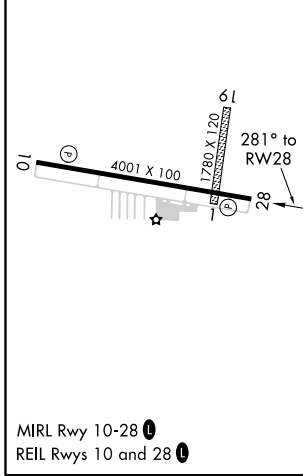
Baro-VNAV NA. DME/DME RNP-0.3 NA. Helicopter visibility reduction below 3/4 SM NA. Use Dane County Rgnl-Truax Fld altimeter setting; when not received, use Baraboo altimeter setting and increase all MDAs 60 feet and S-10 Cat C visibility 1/4 SM and Circling Cat C visibility 1/4 SM. Circling NA to Rwy 1 and 19.

MISSED APPROACH: Climb to 4000 direct JALOX and hold.

AWOS-3 118.675	MADISON APP CON★ 135.45 343.7	GCO 121.725	UNICOM 123.0 (CTAF)
--------------------------	---	-----------------------	-------------------------------

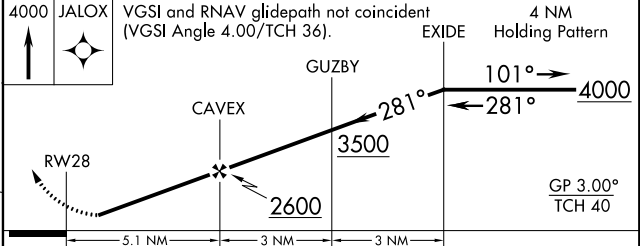


ELEV 928	TDZE 928
-----------------	-----------------



Procedure NA for arrivals at JVL VOR/DME via V97 southeast bound.

(IAF) JANESVILLE JVL



CATEGORY	A	B	C	D
LPV DA	1326-1½	398 (400-1½)		NA
LNAV/VNAV DA	1442-1¾	514 (600-1¾)		NA
LNAV MDA	1480-1	552 (600-1)	1480-1½ 552 (600-1½)	NA
CIRCLING	1560-1 632 (700-1)	1640-1 712 (800-1)	1660-2 732 (800-2)	NA

EC-3, 16 JUN 2022 to 14 JUL 2022

EC-3, 16 JUN 2022 to 14 JUL 2022