

VORTAC MSN <b>108.6</b> Chan <b>23</b>	APP CRS <b>254°</b>	Rwy Idg TDZE Apt Elev	<b>4001</b> <b>928</b> <b>928</b>
--	------------------------	-----------------------------	---

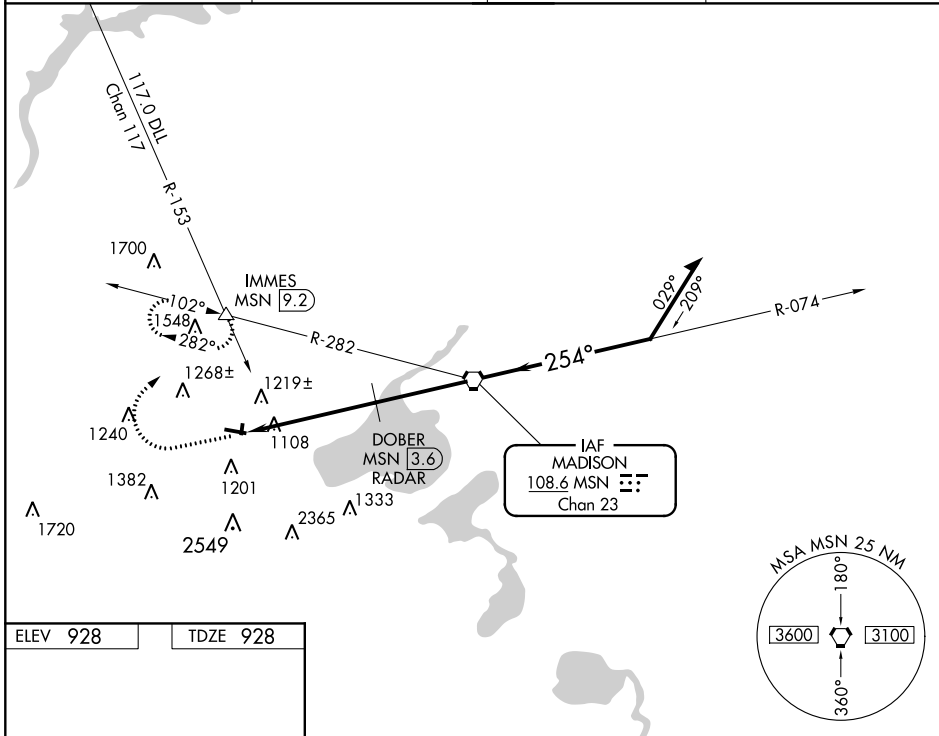
# VOR RWY 28

MIDDLETON MUNI/MOREY FLD (C29)

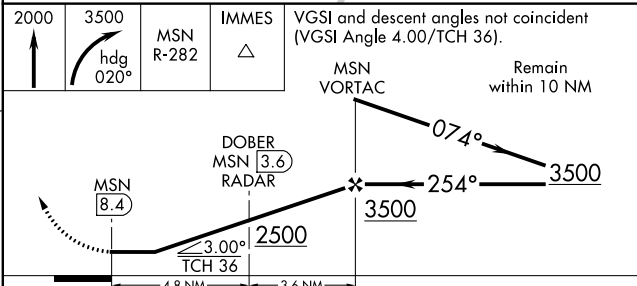
**NA** Use Dane County Rgnl-Truax Fld altimeter setting; when not received, use Baraboo altimeter setting and increase all MDAs 60 feet and S-10 Cat C visibility ¼ SM and Circling Cat C visibility ¼ SM. RADAR or DME required. Circling NA to Rwys 1 and 19. Rwy 28 helicopter visibility reduction below ¼ SM NA.

**MISSED APPROACH:** Climb to 2000 then climbing right turn to 3500 via heading 020° and MSN R-282 to IMMES INT/9.2 DME and hold.

AWOS-3 <b>118.675</b>	MADISON APP CON* <b>135.45 343.7</b>	GCO <b>121.725</b>	UNICOM <b>123.0 (CTAF) 0</b>
--------------------------	---	-----------------------	---------------------------------



ELEV 928	TDZE 928
MIRL Rwy 10-28	
REIL Rwys 10 and 28	
FAF to MAP 8.4 NM	
Knots	60 90 120 150 180
Min:Sec	8:24 5:36 4:12 3:22 2:48



CATEGORY	A	B	C	D
S-28	1500-1	572 (600-1)	1500-1½ 572 (600-1½)	NA
CIRCLING	1560-1 632 (700-1)	1640-1 712 (800-1)	1660-2 732 (800-2)	NA

EC-3, 16 JUN 2022 to 14 JUL 2022

EC-3, 16 JUN 2022 to 14 JUL 2022