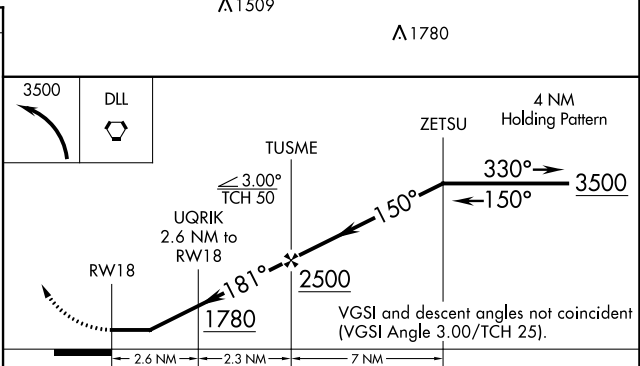
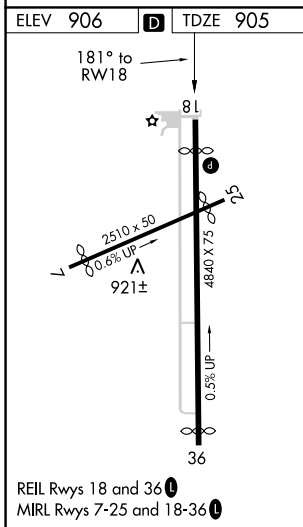
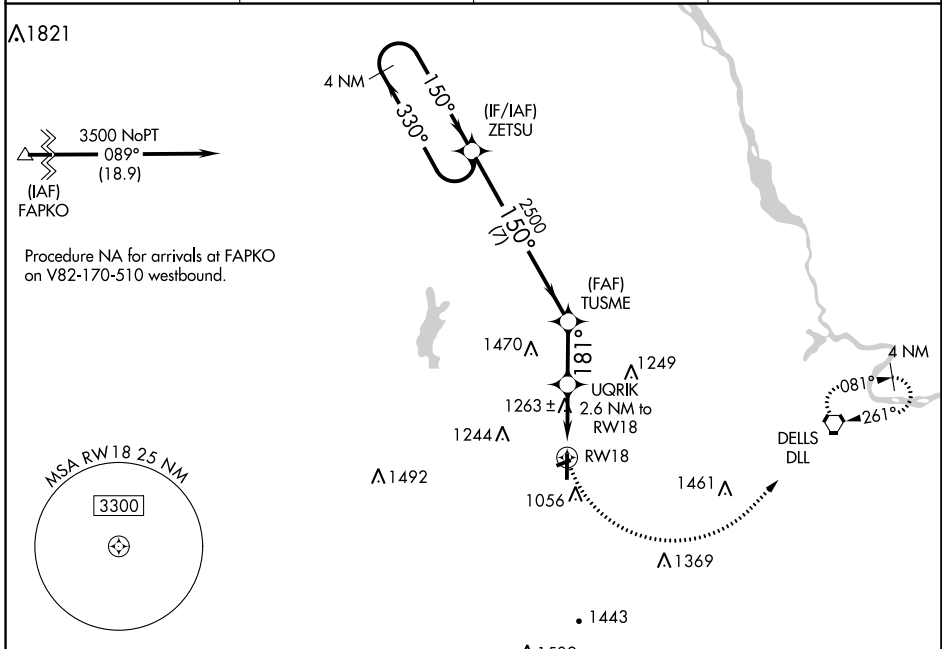


| | | | |
|--|------------------------|-----------------------------|---|
| WAAS CH 78427 W18A | APP CRS 181° | Rwy ldg TDZE Apt Elev | 4100 905 906 |
|--|------------------------|-----------------------------|---|

RNAV (GPS) RWY 18

REEDSBURG MUNI (C35)

| | | | |
|---|--|--|---------------------------------|
| <p>▼ Use Baraboo altimeter setting; when not received, use Lone Rock altimeter setting and increase all MDA 60 feet. DME/DME RNP-0.3 NA. Procedure NA at night. Visibility reduction by helicopters NA.</p> <p>▲ NA</p> | <p>MISSED APPROACH: Climbing left turn to 3500 direct DLL VORTAC and hold.</p> | | |
| AWOS-3PT 118.95 | DLL AWOS-3 118.325 | MADISON APP CON ★ 135.45 343.7 | UNICOM 122.8 (CTAF) ① |



| CATEGORY | A | B | C | D |
|-------------------|--------|-------------|---|----|
| LP MDA | 1560-1 | 655 (700-1) | | NA |
| LNAV MDA | 1580-1 | 675 (700-1) | | NA |
| C CIRCLING | 1600-1 | 694 (700-1) | | NA |

EC-3, 16 JUN 2022 to 14 JUL 2022

EC-3, 16 JUN 2022 to 14 JUL 2022