

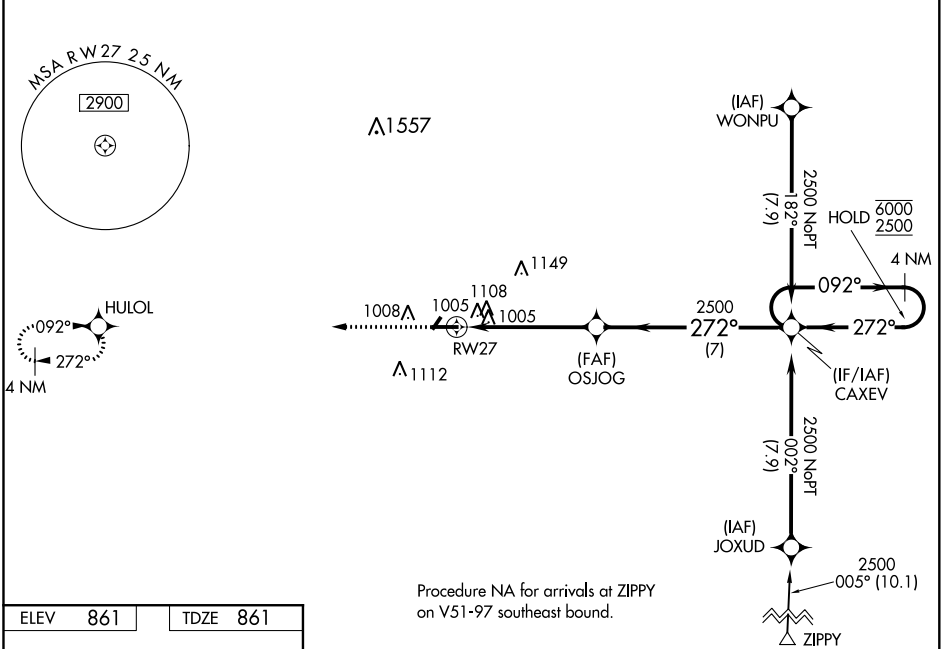
WAAS CH 65734 W27A	APP CRS 272°	Rwy Idg TDZE Apt Elev	5000 861 861
--	------------------------	-----------------------------	---

RNAV (GPS) RWY 27

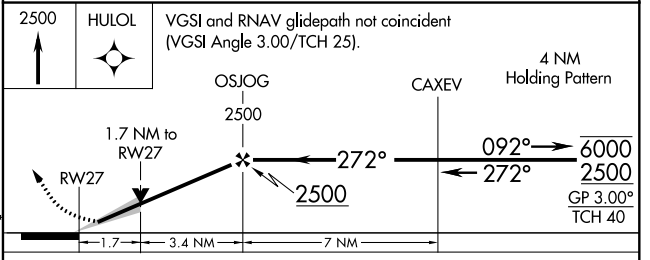
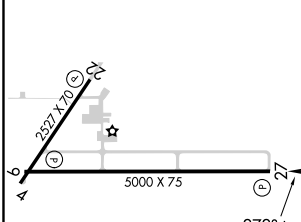
FRANKFORT CLINTON COUNTY RGNL (F'KR)

RNP APCH - GPS.	<p>MISSED APPROACH: Climb to 2500 direct HULOL and hold.</p>
<p>▽ Circling Rwy 4, 22 NA at night. For uncompensated Baro-VNAV systems, LNAV/VNAV NA below -16°C or above 54°C.</p>	

AWOS-3 124.325	GRISSOM APP CON * 123.85 291.675	UNICOM 123.0 (CTAF) 0
--------------------------	--	---------------------------------



ELEV 861	TDZE 861
-----------------	-----------------



CATEGORY	A	B	C	D
LPV DA	1111-3/4 250 (300-3/4)			
LNAV/VNAV DA	1476-13/4 615 (700-13/4)			
LNAV MDA	1420-1	559 (600-1)	1420-1 1/8	559 (600-1 1/8)
C CIRCLING	1460-1	599 (600-1)	1520-1 3/4 659 (700-1 3/4)	1520-2 659 (700-2)

MIRL Rwy 9-27 and 4-22 **0**
REIL Rwy 9 and 27 **0**

EC-2, 16 JUN 2022 to 14 JUL 2022

EC-2, 16 JUN 2022 to 14 JUL 2022