

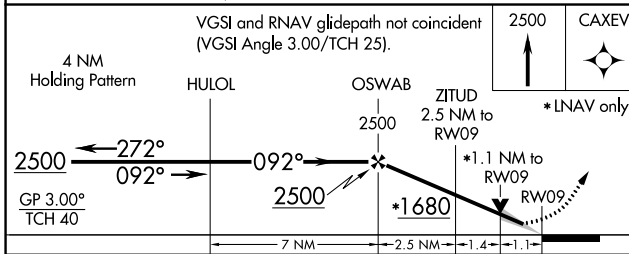
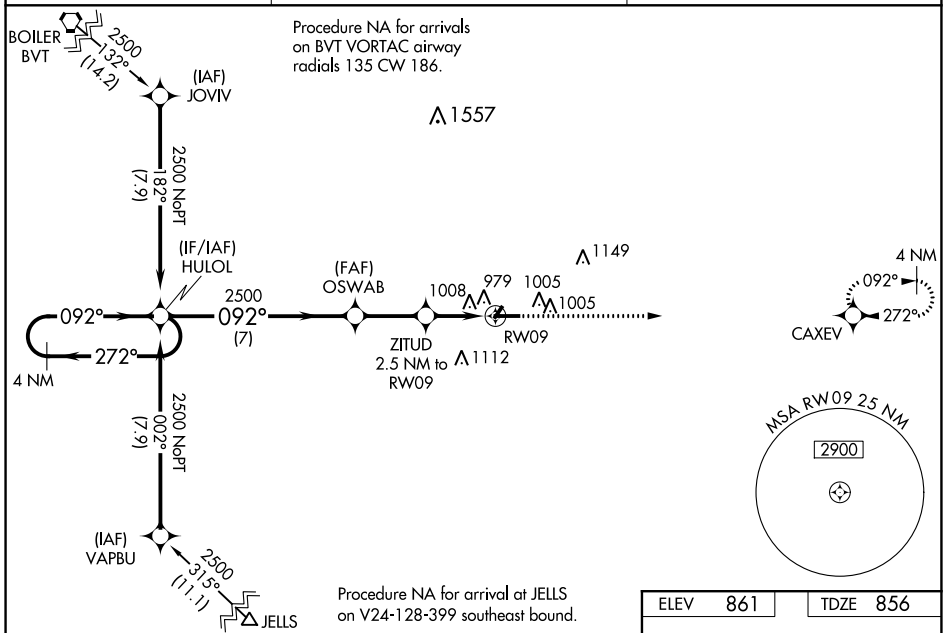
WAAS CH 62834 W09A	APP CRS 092°	Rwy Idg TDZE Apt Elev	5000 856 861
--	------------------------	-----------------------------	---

RNAV (GPS) RWY 9
FRANKFORT CLINTON COUNTY RGNL (F'K'R)

Baro-VNAV NA when using Indianapolis Exec altimeter setting. For uncompensated Baro-VNAV systems, LNAV/VNAV NA below -16°C (4°F) or above 54°C (130°F). DME/DME RNP-0.3 NA. VDP NA with Indianapolis Exec altimeter setting. When local altimeter setting not received, use Indianapolis Exec altimeter setting; increase LPV DA to 1162 feet and visibility 1/8 SM all Cats; increase LNAV/VNAV DA to 1245 feet and visibility 1/8 SM all Cats; increase all MDAs 60 feet and LNAV and Circling Cats C/D visibilities 1/4 SM.

MISSED APPROACH:
Climb to 2500 direct CAXEV and hold.

AWOS-3 124.325	GRISSOM APP CON* 123.85 291.675	UNICOM 123.0 (CTAF) 0
--------------------------	---	---------------------------------



ELEV 861	TDZE 856
----------	----------

MSA RW09 25 NM

2900

5000 X 75

092° to RW09

MIRA Rwy 4-22 and 9-27 0

REIL Rwy 9 and 27 0

EC-2, 16 JUN 2022 to 14 JUL 2022