

APP CRS	Rwy Idg	<b>4000</b>
<b>232°</b>	TDZE	<b>995</b>
	Apt Elev	<b>995</b>

# RNAV (GPS) RWY 23

TRI-STATE STEUBEN COUNTY (A.N.Q.)

RNP APCH.

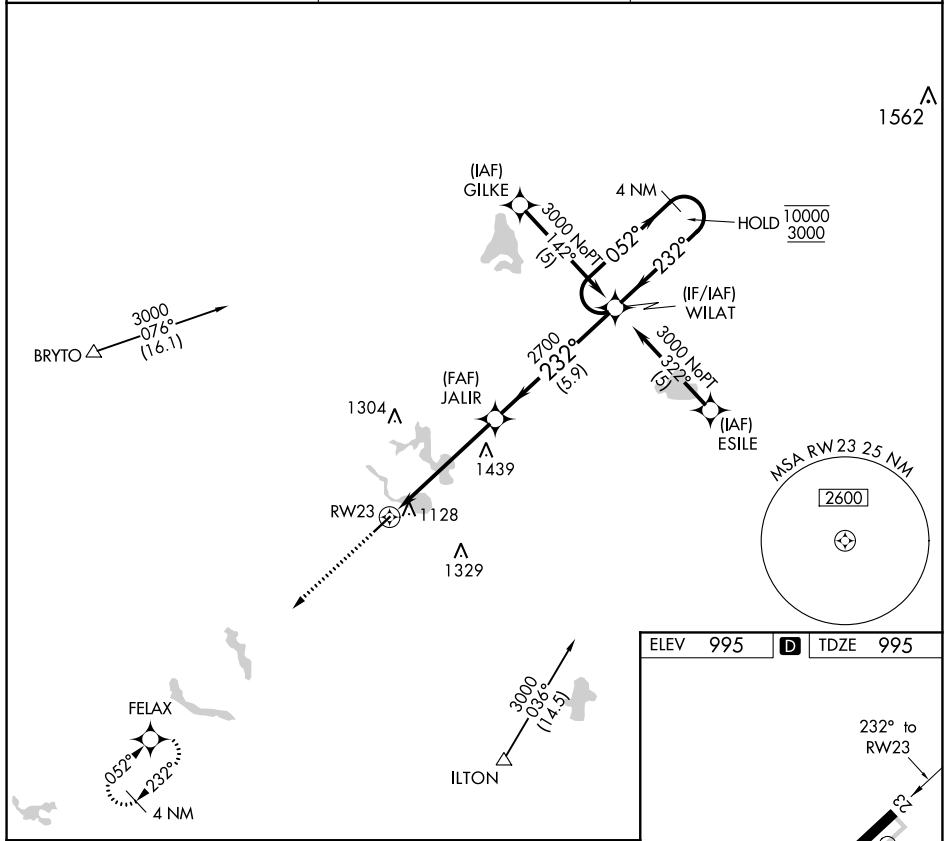
**▼** Rwy 23 helicopter visibility reduction below 1 SM NA.  
Procedure NA at night.

MISSED APPROACH: Climb to 3000  
direct FELAX and hold.

AWOS-3  
**118.175**

FORT WAYNE APP CON  
**127.2 284.6** (SW/NW)  
**132.15 284.6** (SE/NE)

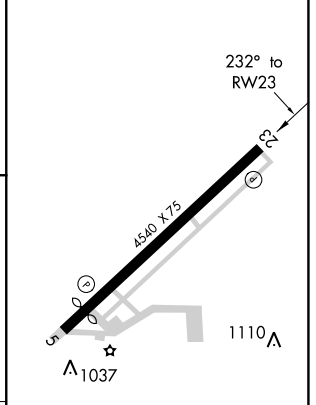
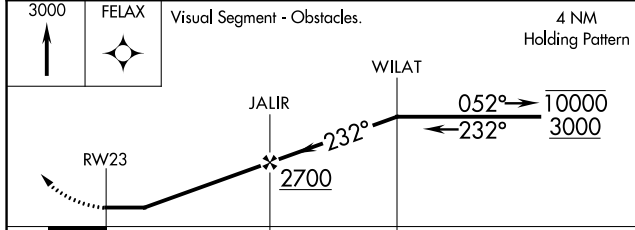
UNICOM  
**123.075** (CTAF) **①**



EC-2, 16 JUN 2022 to 14 JUL 2022

EC-2, 16 JUN 2022 to 14 JUL 2022

ELEV	995	<b>D</b>	TDZE	995
------	-----	----------	------	-----



CATEGORY	A	B	C	D
LNAV MDA	1700-1	705 (800-1)	1700-2 705 (800-2)	NA

REIL Rwys 5 and 23 **①**  
MIRL Rwy 5-23 **①**