

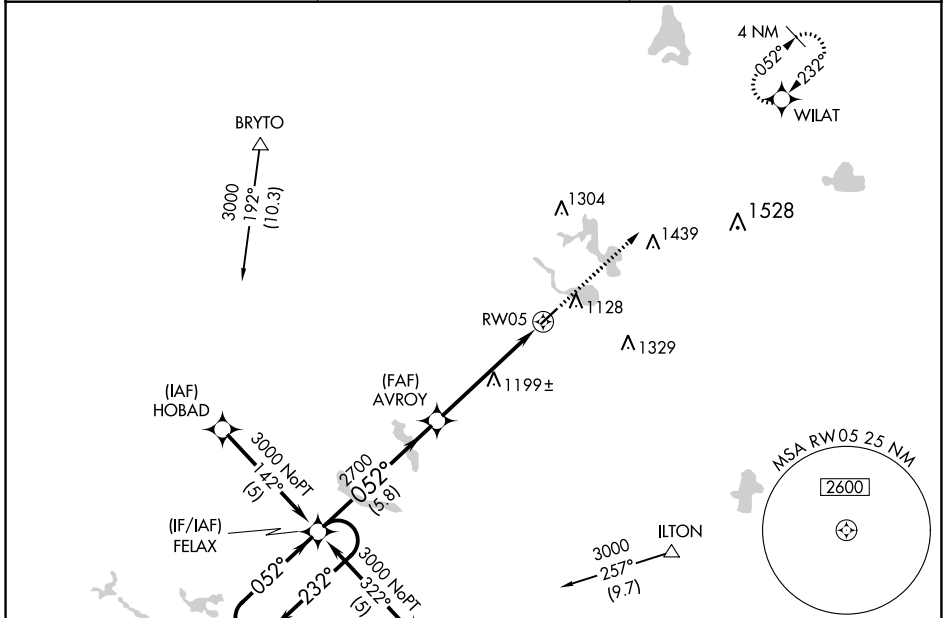
APP CRS	Rwy Idg	4000
052°	TDZE	990
	Apt Elev	995

RNAV (GPS) RWY 5

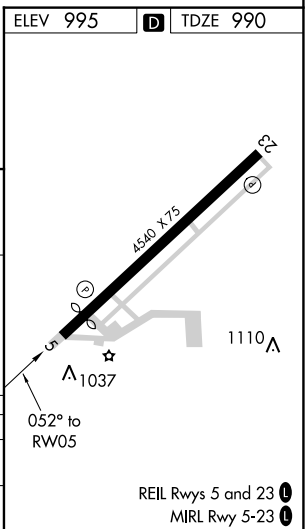
TRI-STATE STEUBEN COUNTY (ANQ)

RNP APCH.	For uncompensated Baro-VNAV systems, LNAV/VNAV NA below -16°C or above 54°C. Rwy 5 helicopter visibility reduction below 3/4 SM NA.	MISSED APPROACH: Climb to 3000 direct WILAT and hold.
-----------	--	--

AWOS-3 118.175	FORT WAYNE APP CON 127.2 284.6 (SW/NW) 132.15 284.6 (SE/NE)	UNICOM 123.075 (CTAF) 1
--------------------------	---	--



ELEV 995		TDZE 990	
4 NM Holding Pattern		3000 WILAT	
3000 ← 232°		↑ 3000 WILAT	
→ 052°		✧ WILAT	
GP 3.00°		*1.4 NM to RW05	
TCH 40		*LNAV only	
5.8 NM		3.8 NM	
2700		RW05	
CATEGORY	A	B	C
LNAV/VNAV DA	1474-1 ³ / ₄	484 (500-1 ³ / ₄)	NA
LNAV MDA	1460-1	470 (500-1)	1460-1 ¹ / ₂ 470 (500-1 ¹ / ₂)
			NA



EC-2, 16 JUN 2022 to 14 JUL 2022

EC-2, 16 JUN 2022 to 14 JUL 2022