

WAAS CH <b>99317</b> <b>W34A</b>	APP CRS <b>340°</b>	Rwy Idg TDZE Apt Elev	<b>5000</b> <b>1257</b> <b>1266</b>
--	------------------------	-----------------------------	---

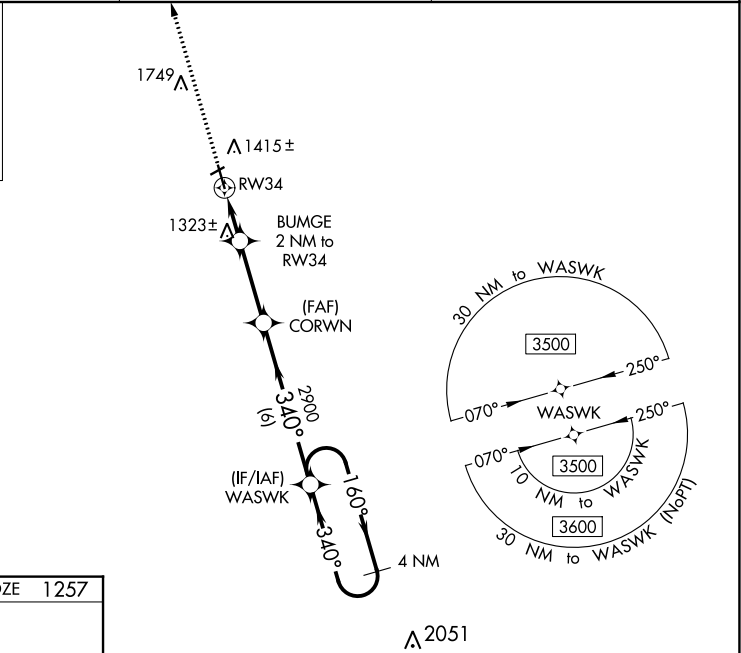
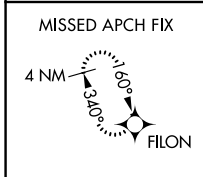
# RNAV (GPS) RWY 34

GWINNER-ROGER MELROE FIELD (GWR)

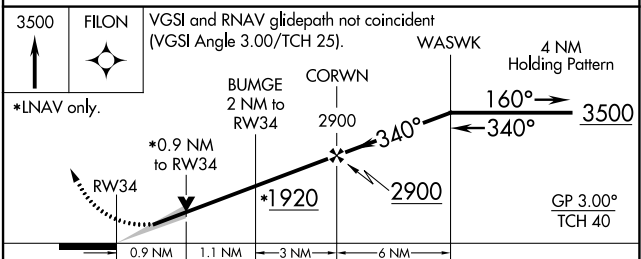
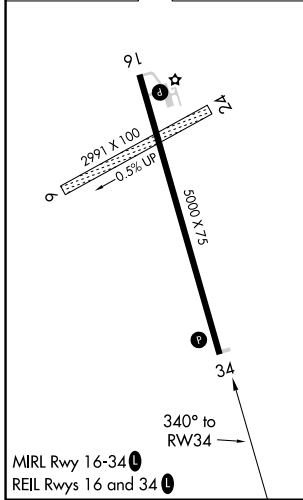
**⚠** Circling NA to Rws 6 and 24. For uncompensated Baro-VNAV systems, LNAV/VNAV NA below -17°C (2°F) or above 54°C (130°F). DME/DME RNP-0.3 NA. When local altimeter setting not received use Fargo altimeter setting; increase all DA to 1683 feet and all visibilities ½ SM; increase all MDAs 180 feet and visibility LNAV Cat C/D ½ SM, and Circling Cat C ¾ SM, and Circling Cat D ½ SM. Baro-VNAV and VDP NA when using Fargo altimeter setting.

MISSED APPROACH:  
Climb to 3500 direct  
FILON and hold.

AWOS-3 <b>118.325</b>	MINNEAPOLIS CENTER <b>127.35 278.3</b>	UNICOM <b>122.7(CTAF)</b> <b>Ⓛ</b>
--------------------------	---	---------------------------------------



ELEV 1266	TDZE 1257
-----------	-----------



CATEGORY	A	B	C	D
LPV DA		1507-1	250 (300-1)	
LNAV/VNAV DA		1507-1	250 (300-1)	
LNAV MDA		1580-1	323 (400-1)	
<b>C</b> CIRCLING	1780-1	514 (600-1)	1840-1½ 574 (600-1½)	2060-2½ 794 (800-2½)

NC-1, 16 JUN 2022 to 14 JUL 2022

NC-1, 16 JUN 2022 to 14 JUL 2022