

| | | |
|---|------------------------|---|
| VORTAC MVC 116.8 Chan 115 | APP CRS 095° | Rwy Idg 5004 TDZE 259 Apt Elev 259 |
|---|------------------------|---|

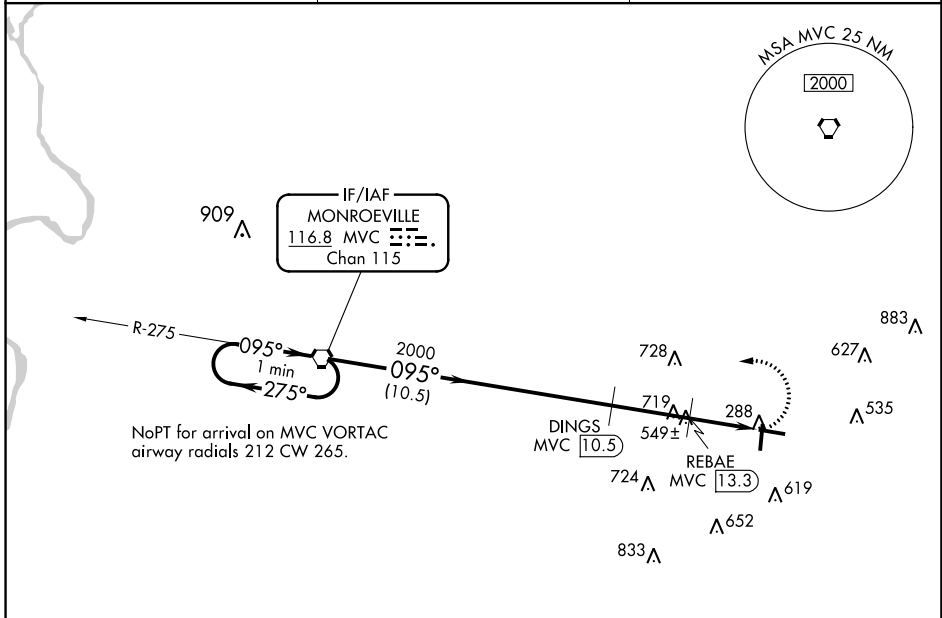
VOR/DME RWY 10

EVERGREEN RGNL/MIDDLETON FLD (GZH)

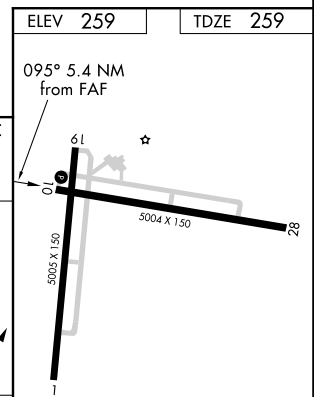
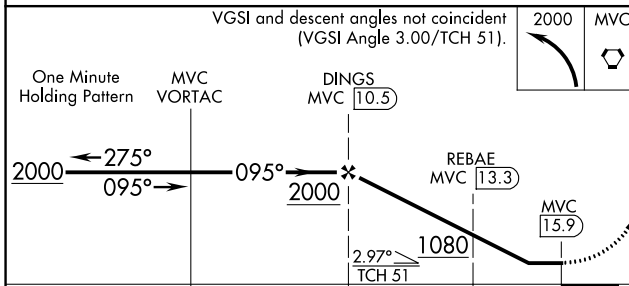
⚠ When local altimeter setting not received, use Andalusia/Opp altimeter setting and increase all MDAs 100 feet and visibility Cat C/D ½ SM. DME required. Rwy 10 helicopter visibility reduction below 1 SM NA. Straight-in Rwy 10 NA at night, Circling Rwy 10, 19 NA at night.

⚠ MISSED APPROACH:
Climbing left turn to 2000
direct MVC VORTAC and hold.

| | | |
|------------------------|--|---------------------------------|
| ASOS 133.425 | JACKSONVILLE CENTER 134.15 338.3 | UNICOM 122.7 (CTAF) 0 |
|------------------------|--|---------------------------------|



| | |
|----------|----------|
| ELEV 259 | TDZE 259 |
|----------|----------|



| CATEGORY | A | B | C | D |
|----------|----------------------|----------------------|----------------------|--|
| S-10 | 800-1 | 541 (600-1) | 800-1 $\frac{5}{8}$ | 541 (600-1 $\frac{5}{8}$) |
| CIRCLING | 800-1 541 (600-1) | 840-1 581 (600-1) | 980-2 721 (800-2) | 1080-2 $\frac{3}{4}$ 821 (900-2 $\frac{3}{4}$) |

MIRL Rwy 1-19 and 10-28 0

SE-4, 16 JUN 2022 to 14 JUL 2022

SE-4, 16 JUN 2022 to 14 JUL 2022